



ROSEBANK CLOSE
TEDDINGTON

JACKSON-STOPS 

ROSEBANK CLOSE TEDDINGTON, TW11

ASKING PRICE: £1,800 PCM

A first floor two bedroom apartment with wooden floors throughout, moments from station, shops and park. There is allocated parking and a Juliet balcony off the living room.

Rosebank Close is just off of Fairfax Road which is less than half a mile to Teddington train station. The High Street and the Royal Bushy Park are also moments away

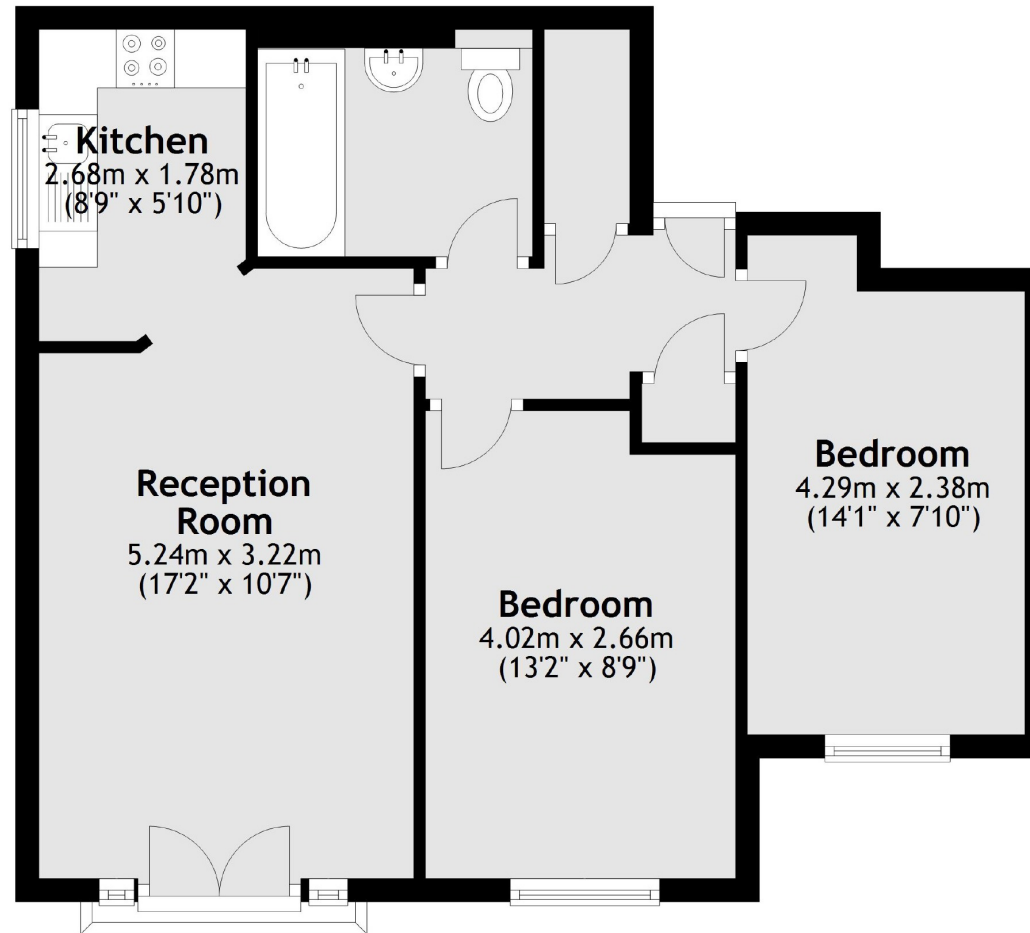


KEY FEATURES

- Two Bedrooms
- First Floor Apartment
- Wood Floors
- Allocated Parking
- Central Location
- Private Development



First Floor



Total area: approx. 51.9 sq. metres (558.6 sq. feet)

Energy Rating: C. We aim to make our particulars both accurate and reliable. However they are not guaranteed; nor do they form part of an offer or contract. If you require clarification on any points then please contact us, especially if you are travelling some distance to view. Please note that appliances and heating systems have not been tested and therefore no warranties can be given as to their good working order.

ASKING PRICE: £1,800 PCM

TEDDINGTON

020 8943 9955

teddingtonlettings@jackson-stops.com

jackson-stops.co.uk

JACKSON-STOPS 