



FAIRFAX ROAD
TEDDINGTON

JACKSON-STOPS 

FAIRFAX ROAD, TEDDINGTON, TW11

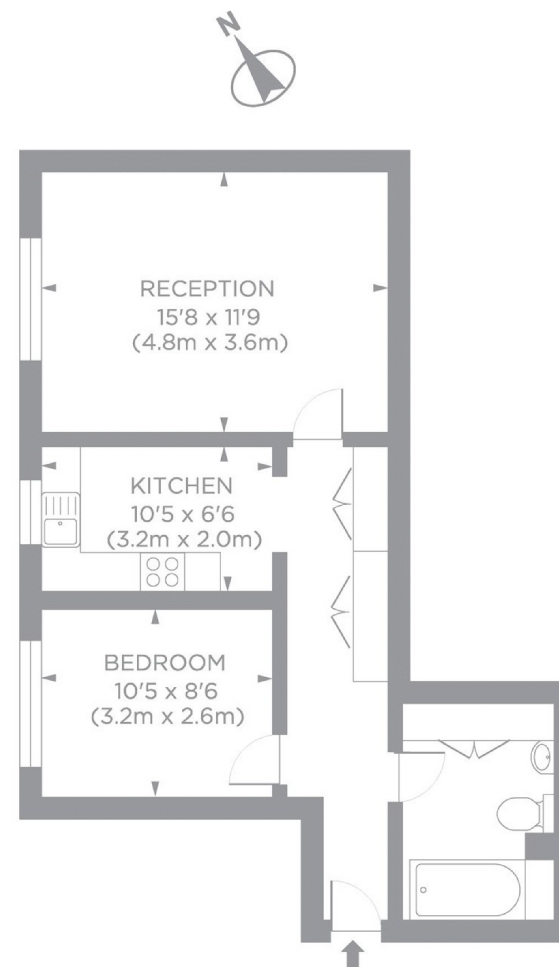
ASKING PRICE: £1,499 PCM

A centrally located spacious top floor one bedroom with excellent storage conveniently located 0.3 of a mile from Teddington Station. Perfect for a couple or single occupant.

Fairfax Road leads from Kingston Lane and Station Road. Teddington train station is on your doorstep with a shortcut through to Bushy Park. The High Street is nearby with coffee shops, bars, restaurants and supermarkets.

KEY FEATURES

- One Double Bedroom
- Close to Station
- Communal Gardens
- Modern Bathroom
- Fitted Kitchen
- Spacious Flat



Fairfax Road TW11
Gross internal area 538 sq ft/50 sq metres
©photosandfloorplans.com

Energy Rating: D. We aim to make our particulars both accurate and reliable. However they are not guaranteed; nor do they form part of an offer or contract. If you require clarification on any points then please contact us, especially if you are travelling some distance to view. Please note that appliances and heating systems have not been tested and therefore no warranties can be given as to their good working order.

ASKING PRICE: £1,499 PCM

TEDDINGTON

020 8943 9955

teddingtonlettings@jackson-stops.com

jackson-stops.co.uk

JACKSON-STOPS