



HARROWDENE GARDENS
MIDDLESEX

JACKSON-STOPS 

HARROWDENE GARDENS MIDDLESEX, TW11

ASKING PRICE: £1,650 PCM

In immaculate condition throughout, is this one double bedroom flat opposite the Royal Bushy Park. The property is bright and airy throughout, there is ample storage and communal gardens. Harrowdene Gardens is off Sandy Lane, an excellent spot for transport, with a well lit private footpath directly leading to Teddington mainline station and Teddington High Street within minutes. Kingston town centre is within easy reach along with the River Thames.

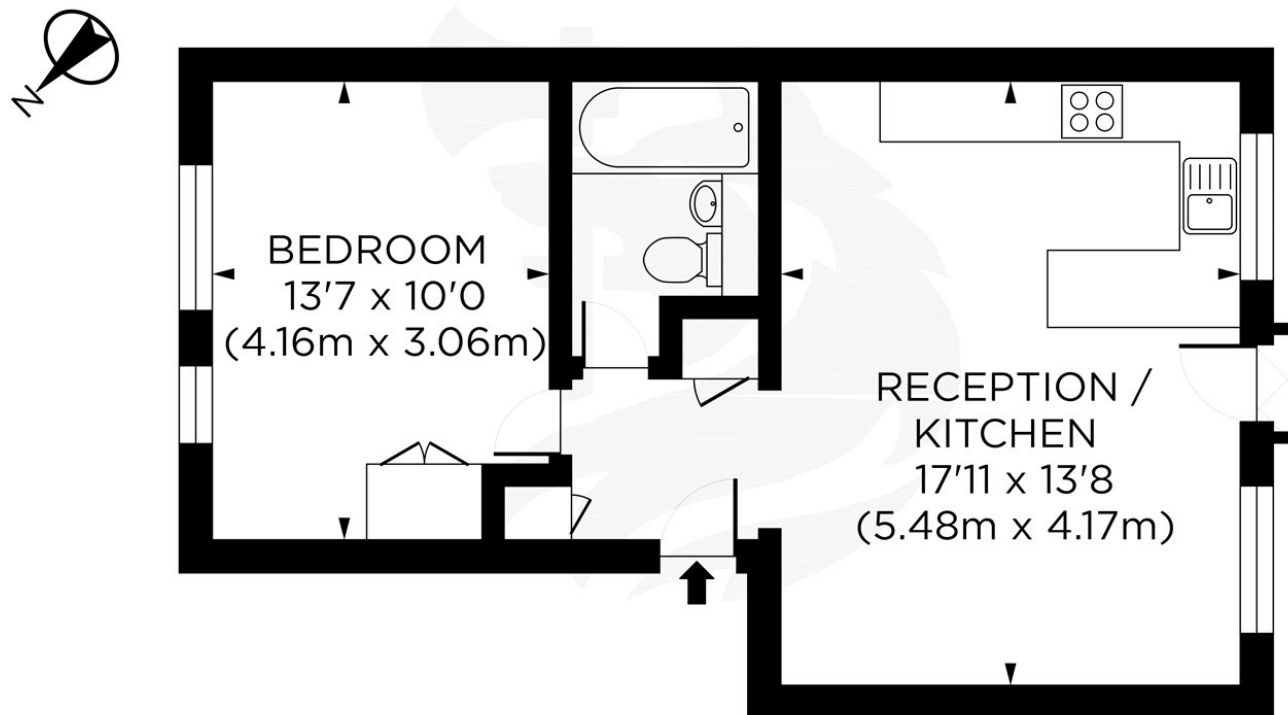


KEY FEATURES

- One Bedroom
- Modern Interior
- Overlooking Bushy Park
- 0.6 miles from Station
- Wooden floors throughout
- Communal Gardens







SECOND FLOOR

Gross Internal Area 473 sq ft/44 sq metres
c photosandfloorplans.com

Energy Rating: D. We aim to make our particulars both accurate and reliable. However they are not guaranteed; nor do they form part of an offer or contract. If you require clarification on any points then please contact us, especially if you are travelling some distance to view. Please note that appliances and heating systems have not been tested and therefore no warranties can be given as to their good working order.

ASKING PRICE: £1,650 PCM

TEDDINGTON

020 8943 9955

teddingtonlettings@jackson-stops.com

jackson-stops.co.uk

JACKSON-STOPS 