



DERISLEY CLOSE  
WEST BYFLEET

JACKSON-STOPS 

## DERISLEY CLOSE, WEST BYFLEET, KT14

ASKING PRICE: £2,500 PCM

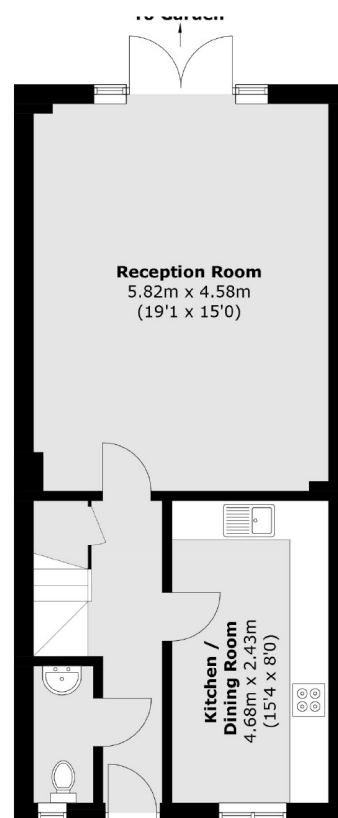
This 4 bedroom terraced house in a gated development offers modern living with a spacious lounge, modern kitchen, and a private garden. The property is situated over three floors with three bathrooms and 3 double bedrooms and comes with off street parking.

Byfleet village consists of local businesses, restaurants and cafés. The house is 0.9 miles away from Byfleet and New Haw railway station which has regular trains to Waterloo Station. There is close access to the M25 and A3 making it perfect for those who commute.

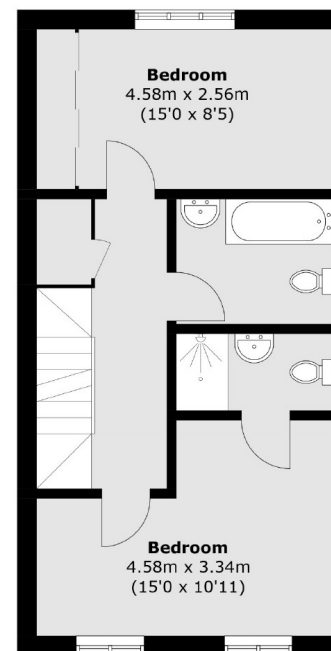
### KEY FEATURES

- Four Bedrooms
- Three Bathrooms
- Gated Development
- Private Garden
- Off-Street Parking
- Close to Reputable Local Schools

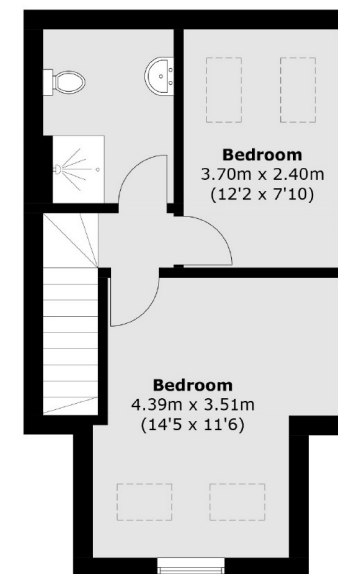
Energy Rating: C. We aim to make our particulars both accurate and reliable. However they are not guaranteed; nor do they form part of an offer or contract. If you require clarification on any points then please contact us, especially if you are travelling some distance to view. Please note that appliances and heating systems have not been tested and therefore no warranties can be given as to their good working order.



Ground Floor



First Floor



Second Floor

Total area (approx.): 127.1 sq. m (1,368.0 sq. ft)

ASKING PRICE: £2,500 PCM

WEYBRIDGE

01932 859 355

weybridge@jackson-stops.co.uk

jackson-stops.co.uk

JACKSON-STOPS

