



**SEGRAVE CLOSE**  
WEYBRIDGE

**JACKSON-STOPS** 



---

## SEGRAVE CLOSE WEYBRIDGE, KT13

ASKING PRICE: £599,950

Offered to the market with no onward chain is this well positioned six bedroom HMO house which has potential to extend STPP. There is ample scope to make your own mark on this house with the unusually large plot. This property is not to be missed.

Conveniently located for St George's Hill Lawn Tennis Club, the David Lloyd Gym, Silvermere Golf and Leisure facility and Brooklands, which includes Mercedes Benz World, Marks and Spencer and a Tesco Superstore. Weybridge station is within 1.3 Miles of the property and offers a frequent service to London Waterloo. The A3 and M3 are both only a short drive away giving access to Central London, the M25 and Gatwick and Heathrow airports.

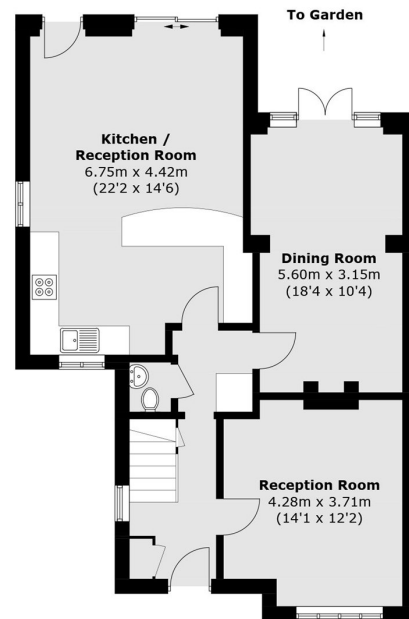
### KEY FEATURES

- Freehold House
- No Onward Chain
- Four Bedrooms HMO
- Off Street Parking
- Large Plot
- Potential To Extend STPP

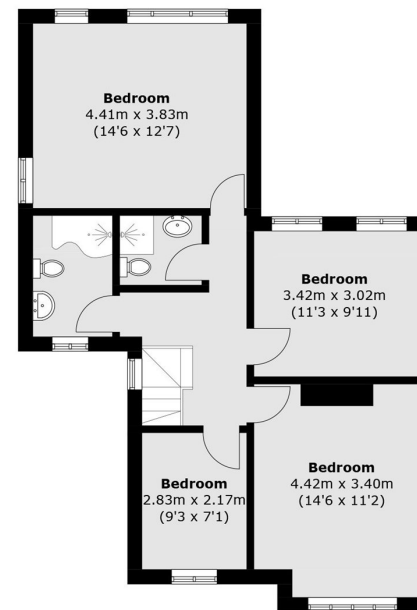






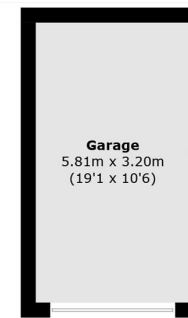


**Ground Floor**



**First Floor**

Total area (approx.): 139.7 sq. m (1,503.6 sq. ft)  
Garage: 18.8 sq. m (202.4 sq. ft)



(Not Shown In Actual Location / Orientation)

Energy Rating: C. We aim to make our particulars both accurate and reliable. However they are not guaranteed; nor do they form part of an offer or contract. If you require clarification on any points then please contact us, especially if you are travelling some distance to view. Please note that appliances and heating systems have not been tested and therefore no warranties can be given as to their good working order.

**ASKING PRICE: £599,950**

**WEYBRIDGE**

**01932 821 160**

weybridge@jackson-stops.co.uk

jackson-stops.co.uk

**JACKSON-STOPS**

