



**CROFTON AVENUE**  
WALTON-ON-THAMES

**JACKSON-STOPS** 



---

## CROFTON AVENUE WALTON-ON-THAMES, KT12

ASKING PRICE: £2,750 PCM

We're offering a well-presented three-bedroom bungalow near Walton on Thames station. It includes a lounge with a fireplace, a kitchen with dining area, a master bedroom with an en-suite and dressing room, two more bedrooms, a family bathroom, and a garden with a patio and lawn.

Crofton Avenue comprises private roads near shops within half a mile and a mainline station 0.7 miles away. Many homes in this sought-after area have been expanded to become spacious family residences. Authentic bungalows are rare here, making this location particularly desirable.

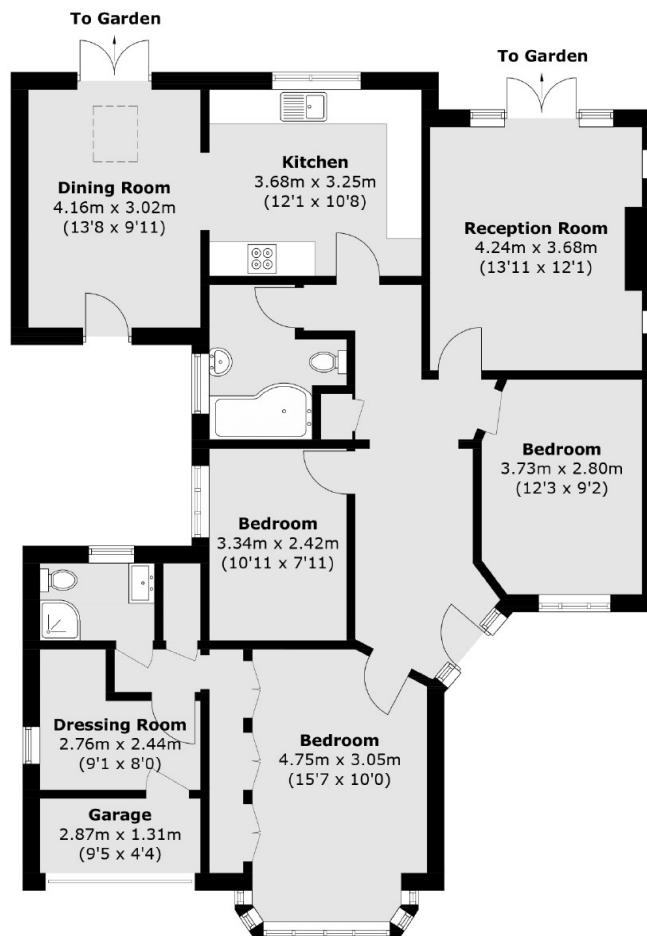
### KEY FEATURES

- Three Bedrooms
- Two Bathrooms
- Private Road
- Dining Area With Vaulted Ceiling
- Large Private Garden









Total area (approx.): 115.2 sq. m (1240.0 sq. ft)  
(Including Garage)

Energy Rating: . We aim to make our particulars both accurate and reliable. However they are not guaranteed; nor do they form part of an offer or contract. If you require clarification on any points then please contact us, especially if you are travelling some distance to view. Please note that appliances and heating systems have not been tested and therefore no warranties can be given as to their good working order.

**ASKING PRICE: £2,750 PCM**

**WEYBRIDGE**

**01932 859 355**

weybridge@jackson-stops.co.uk

jackson-stops.co.uk

**JACKSON-STOPS**

