



LITTLEWORTH ROAD  
ESHER

JACKSON-STOPS 



---

## LITTLEWORTH ROAD ESHER, KT10

ASKING PRICE: £450,000

Esher Park Gardens offers a sophisticated blend of modern living within a tranquil setting. This contemporary two-bedroom apartment is situated in a thoughtfully converted development which boasts a high-spec finish throughout.

A sleek open-plan kitchen with integrated appliances, a spacious living area, and large windows that flood the space with natural light. Two double bedrooms and a stylish family bathroom provide ample accommodation.

Residents benefit from secure entry, lift access, and allocated parking, ensuring both convenience and peace of mind. The apartment's design emphasises clean lines and quality materials, creating a comfortable and elegant living environment.

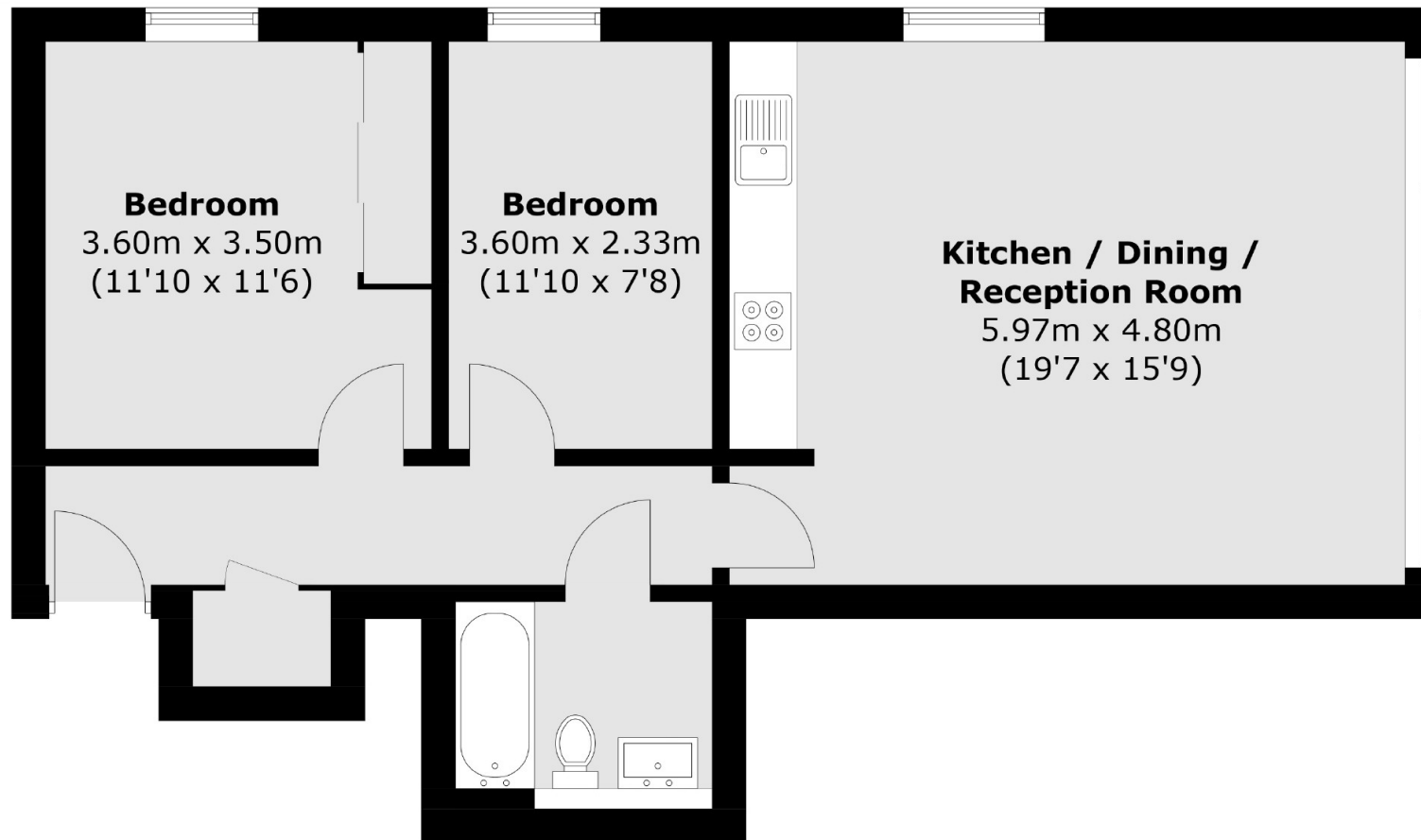
The development is within easy reach of Esher High Street, offering a range of boutique shops, cafes, and restaurants. For those commuting, Esher railway station provides direct services to London Waterloo, making it an excellent choice for professionals. The surrounding area is rich in green spaces, including the nearby Claremont Landscape Garden, providing residents with opportunities for outdoor recreation

### KEY FEATURES

- Two Bedrooms
- Modern Development
- No Onward Chain
- Allocated Parking
- Prestigious Development
- Open Plan Layout







Total area (approx.): 63.4 sq. m (682.4 sq. ft)

Energy Rating: C. We aim to make our particulars both accurate and reliable. However they are not guaranteed; nor do they form part of an offer or contract. If you require clarification on any points then please contact us, especially if you are travelling some distance to view. Please note that appliances and heating systems have not been tested and therefore no warranties can be given as to their good working order.

**ASKING PRICE: £450,000**

**WEYBRIDGE**

**01932 821 160**

[weybridge@jackson-stops.co.uk](mailto:weybridge@jackson-stops.co.uk)

[jackson-stops.co.uk](http://jackson-stops.co.uk)

**JACKSON-STOPS** 