



RAYMOND ROAD

JACKSON-STOPS 

RAYMOND ROAD, , SW19

ASKING PRICE: £3,000 PCM

A recently refurbished two bedroom split level maisonette, offering a spacious reception room, modern fitted kitchen, ground floor cloakroom, master bedroom with en suite shower room, a further double bedroom, bathroom and direct access to communal gardens.

The property is located under half a mile from Wimbledon Town Centre and Station.

KEY FEATURES

- Two Bedrooms
- Two Bathrooms
- Split-Level Maisonette
- Modern Kitchen
- Communal Gardens
- Close to Wimbledon Station

Energy Rating: . We aim to make our particulars both accurate and reliable. However they are not guaranteed; nor do they form part of an offer or contract. If you require clarification on any points then please contact us, especially if you are travelling some distance to view. Please note that appliances and heating systems have not been tested and therefore no warranties can be given as to their good working order.

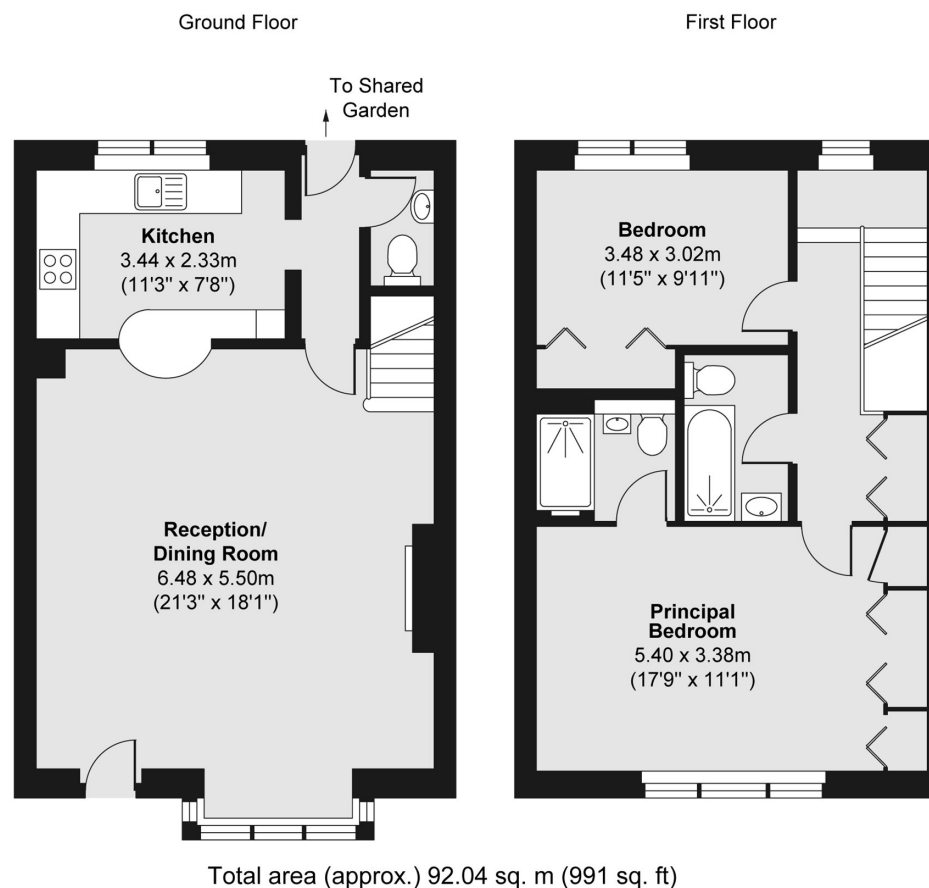
ASKING PRICE: £3,000 PCM

WIMBLEDON

020 8879 0099

wimbledon@jackson-stops.co.uk

jackson-stops.co.uk



JACKSON-STOPS 