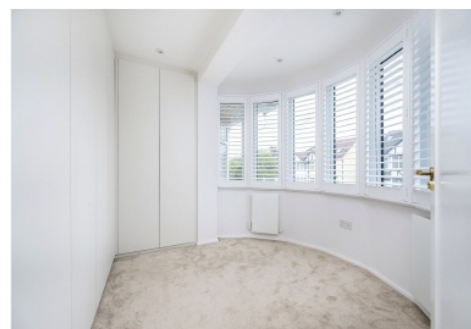


Colin Dean Residential

in partnership with Dexters



Moat Drive, HA1

£4,500 pcm

A newly renovated four bedroom, three bathroom family home offering spacious and modern living in a sought-after location. This beautifully finished property features a large reception room and a modern open-plan kitchen/dining area complete with premium integrated appliances and a stylish central island. Large sliding doors that open directly onto a generous private garden, which includes a sleek, modern outhouse ideal for a home office, gym, or studio.

Upstairs, the master bedroom boasts a luxurious en-suite and a walk-in wardrobe, while the remaining three bedrooms are well-proportioned and served by two additional contemporary bathrooms. Energy Rating: C.

The property is ideally situated with easy access to shopping, dining, and entertainment, and falls within the catchment area of several outstanding-rated schools. Excellent transport links include Harrow & Wealdstone station (Overground and Bakerloo lines) just 0.8 miles away, and Harrow-on-the-Hill station (Metropolitan Line) only 1 mile away. There are two popular shopping centres (St Ann's and St George's) also within close reach, just 1 mile away.

- Semi Detached House • Recently Renovated • Four Double Bedrooms •
- Three Bathrooms • Private Garden • Off Street Parking •

Colin Dean Residential

in partnership with Dexters



Total area (approx): 209.25 sq m (2252 sq. ft)
(Excluding Eaves Storage)

Colin Dean Residential
350 Pinner Road,
Harrow, HA1 4LB
020 8515 7929
daniel.murray@colindean.com

Energy Rating: C We aim to make our particulars both accurate and reliable. However they are not guaranteed; nor do they form part of an offer or contract. If you require clarification on any points then please contact us, especially if you're travelling some distance to view. Please note that appliances and heating systems have not been tested and therefore no warranties can be given as to their good working order.