

Colin Dean Residential

in partnership with Dexters



Manor Road, HA4

£4,000 pcm

A beautifully refurbished three bedroom, two bathroom family home offering stylish, contemporary living in a highly sought-after location. Finished to an exceptional standard throughout, this home features a spacious reception room alongside a stunning open-plan kitchen/dining area. The kitchen features premium integrated appliances, sleek cabinetry, and a striking central island that forms the heart of the home. Elegant art deco-style doors flood the space with natural light and open seamlessly onto a generous private garden.

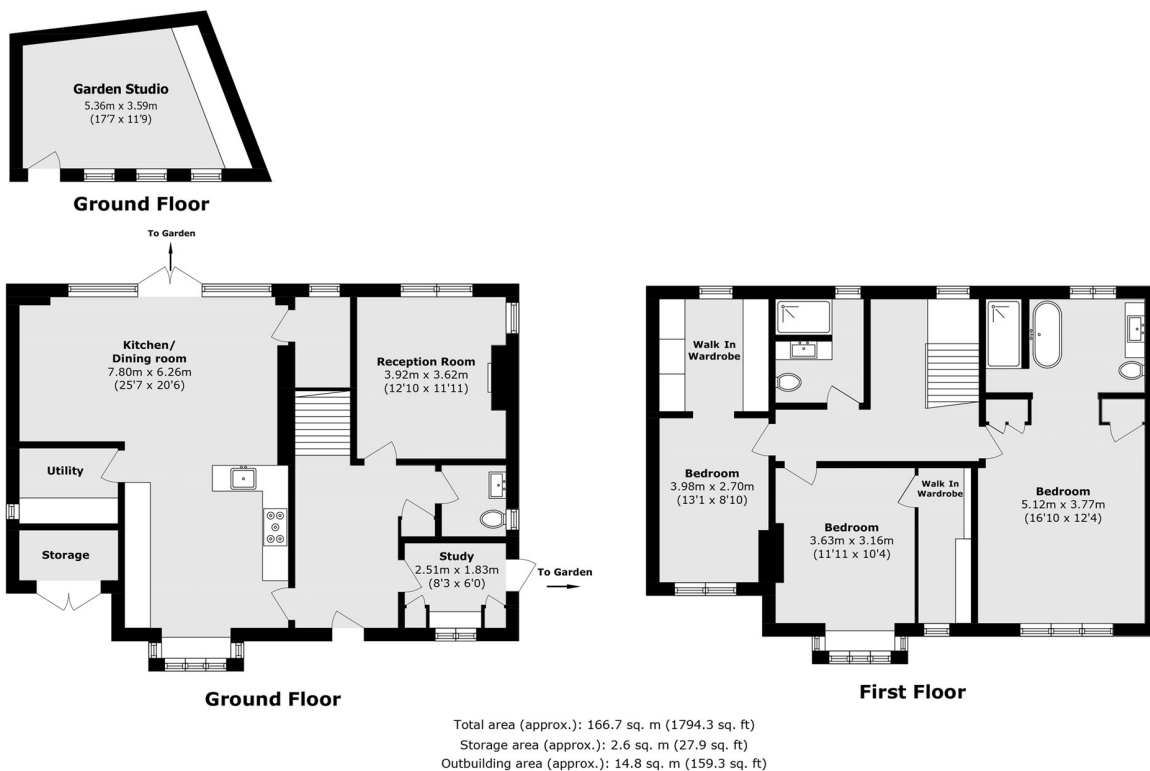
Energy Rating: F.

The property is conveniently positioned close to local shops, bus routes, and highly regarded schools. Ruislip Station (Metropolitan and Piccadilly Lines) is approximately 0.5 miles away, offering convenient and direct connections into Central London and surrounding areas.

- Detached Family House • Recently Refurbished • Three Double Bedrooms •
- Two Bathrooms • Private Garden • Off Street Parking •

Colin Dean Residential

in partnership with Dexters



Colin Dean Residential

350 Pinner Road,
Harrow, HA1 4LB

020 8515 7929

daniel.murray@colindean.com

Energy Rating: F We aim to make our particulars both accurate and reliable. However they are not guaranteed; nor do they form part of an offer or contract. If you require clarification on any points then please contact us, especially if you're travelling some distance to view. Please note that appliances and heating systems have not been tested and therefore no warranties can be given as to their good working order.