



## Codling Close, E1W

£200,000

 ---  1  1  D

- Studio Apartment
- Kitchen area
- Bathroom
- West Wapping Location
- Near to 'Waitrose' Supermarket
- Ideal Investment Opportunity



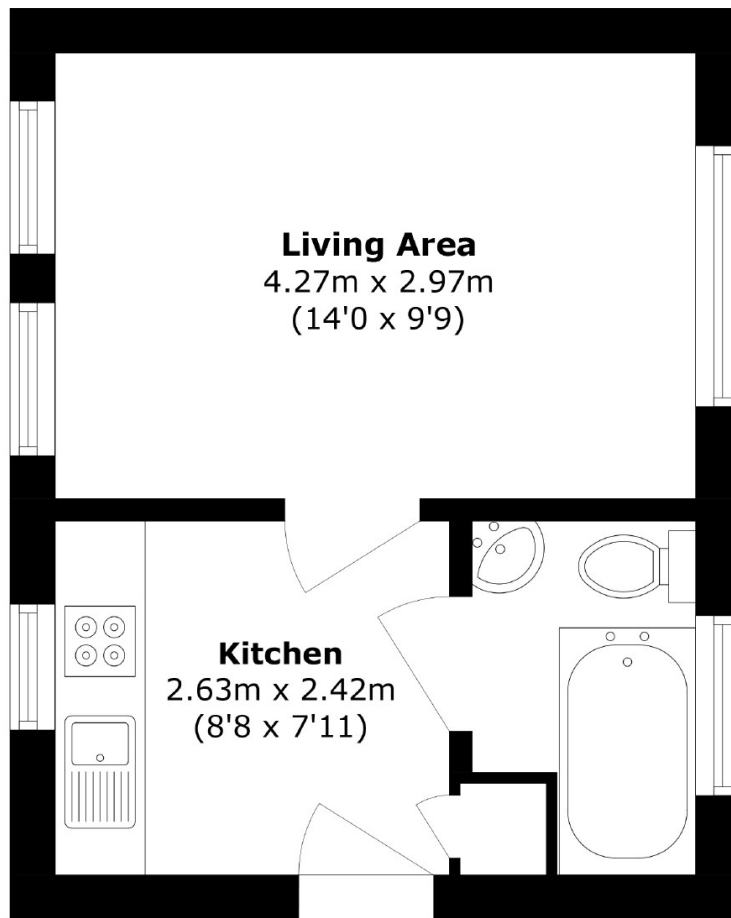


EA2 is pleased to offer for sale this studio apartment located near the ornamental canal in West Wapping. The property features a reception/bedroom, a separate kitchen, and a bathroom. It is an ideal investment opportunity or perfect for a city commuter.

Placed near St Katherine's Docks. Near to Tower Hill stations, with DLR links, Wapping Overground Station, and nearby bus stops providing easy access to key areas such as the City, London Bridge, Canary Wharf, and Shoreditch.







Total area (approx.): 23.3 sq. m (250.8 sq. ft)

35A Wapping High Street,  
London, E1W 1NR  
020 7665 5589  
[ea2group.com](http://ea2group.com)