



White Horse Lane, E1

£730,000

 3  1  2  C

- Gated Development
- Three Bedrooms
- Stepney

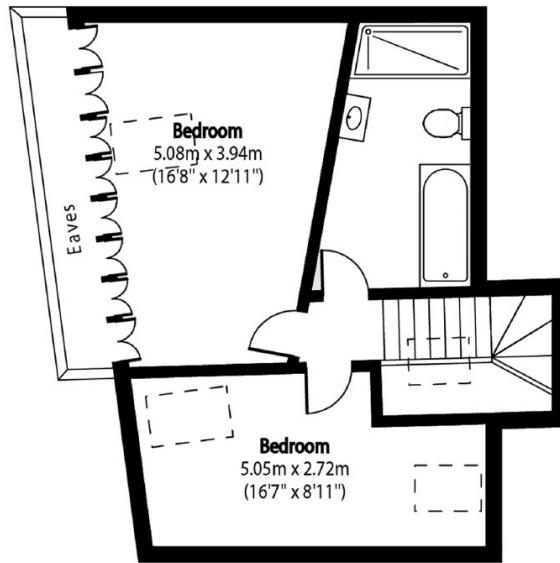
- Parking
- Share of Freehold
- Chain Free



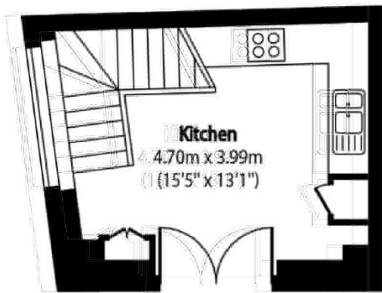
Positioned in a secure gated development in Stepney within this exclusive mews style development is this three Bedroom Maisonette. As you enter the property you are welcomed by a good sized Kitchen with high ceilings and a featured arch window. The open plan Lounge, dining area offers plenty of entertaining space. The property benefits from two Bathrooms, parking and lots of storage in the main Bedroom. A lovely family home or a great buy to let investment. Being offered chain free.

Located approximately 0.2 miles from Stepney Green Station offering access to the City of London, making this property perfect for the commuter. Approximately 0.3 miles from Queen Mary University of London. Under a mile to Sainsburys, Genesis Cinema and nearby Restaurants, Pubs and Cafe's.

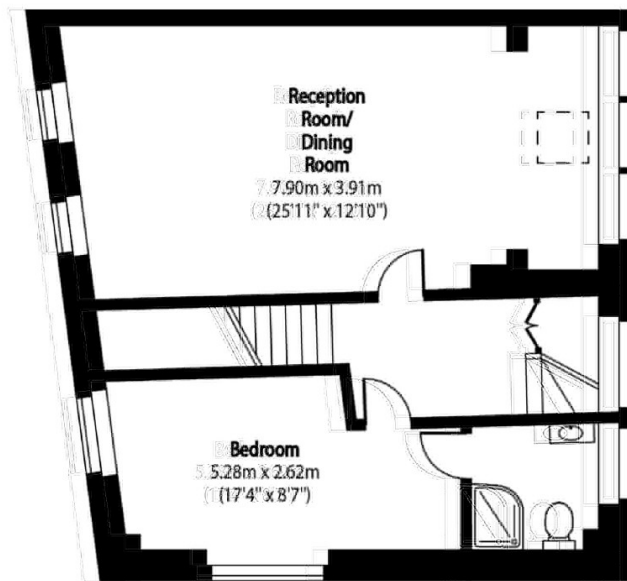




Second Floor



Ground Floor



First Floor

Total area (approx): 120.03 sq m (1292 sq. ft)
 (Excluding Eaves)

35A Wapping High Street,
 London, E1W 1NR
 020 7665 5589
 ea2group.com



Energy Rating: C We aim to make our particulars both accurate and reliable. However they are not guaranteed; nor do they form part of an offer or contract. If you require clarification on any points then please contact us, especially if you're travelling some distance to view. Please note that appliances and heating systems have not been tested and therefore no warranties can be given as to their good working order.