



Wapping High Street, E1W

£800,000

 2  1  2  C

- Three Storey Apartment
- Two Bedrooms
- Chain Free

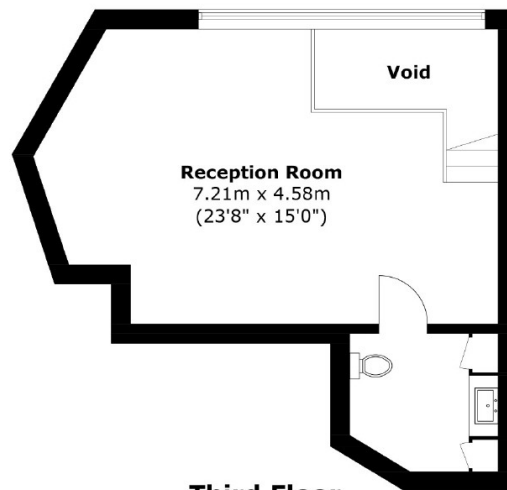
- Modern Kitchen
- Allocated Parking Space
- Share of Freehold



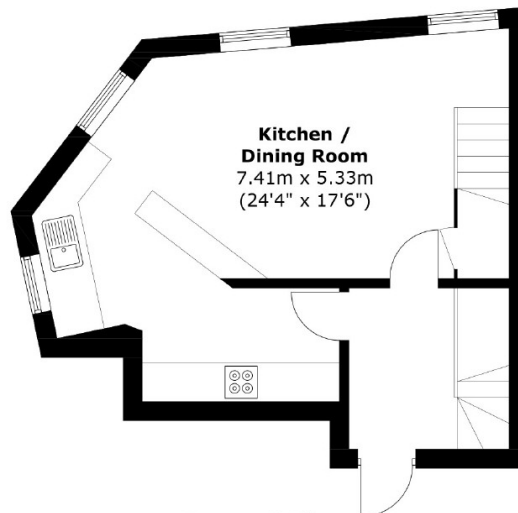
Offers in Excess of £800,000. Located in the heart of Wapping, This characterful property offers accommodation across three floors. Offering two bedrooms, a modern open plan Kitchen leading to a spacious dining area and the reception area on the third floor with a utility area and an abundance of storage space. The property comes with an allocated parking space. Being offered Chain Free.

Located across the road from Wapping Overground Station, the property offers excellent connectivity to The City, Canary Wharf, and Shoreditch. Just 0.8 mile walk to St Katharine's Docks which offers a vibrant selection of waterside restaurants, cafés, and pubs including Emilia's Pasta, Bravas Tapas. Local supermarkets are just a quick walk from the property.

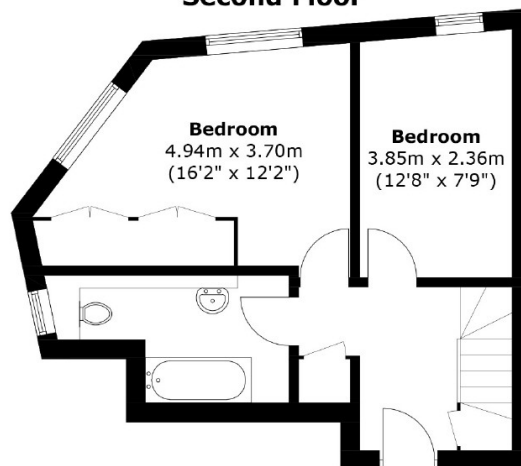




Third Floor



Second Floor



First Floor

Total area: Approx. 107.7 sq. meters (1,159.2 sq. feet)
(Excluding Void)

35A Wapping High Street,
London, E1W 1NR
020 7665 5589
ea2group.com