



## Knighten Street, E1W

£400,000

 1  1  1  C

- One Bedroom Apartment
- Separate Kitchen
- Secure Underground Parking
- Daytime Porter
- Chain Free
- Short Walk To River Thames



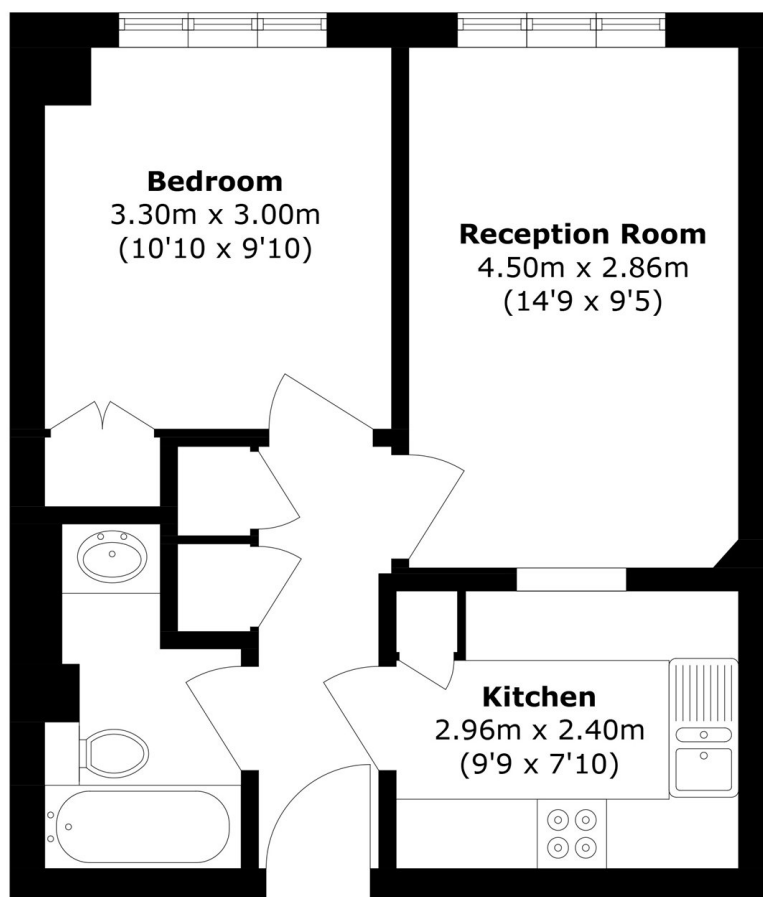


A one bedroom apartment in a secure development with a generously sized reception room, a separate kitchen, a good size bedroom and bathroom. Hermitage Court further benefits from a daytime porter and a secure underground parking with an allocated spot. Located in West Wapping with plenty of transport options to The City. Being offered chain free.

Ideally located in West Wapping, close to St Katharine's Docks and Tower Hill Station (District and Circle Line) and Wapping Overground Station, offering easy access to the City and Canary Wharf. With frequent and connecting bus routes also.







Total area (approx.): 42.6 sq. m (458.5 sq. ft)

35A Wapping High Street,  
London, E1W 1NR  
020 7665 5589  
[ea2group.com](http://ea2group.com)