



St. Katharines Way, E1W

£350,000

 1  1  1  E

- One Bedroom
- First Floor
- Separate WC

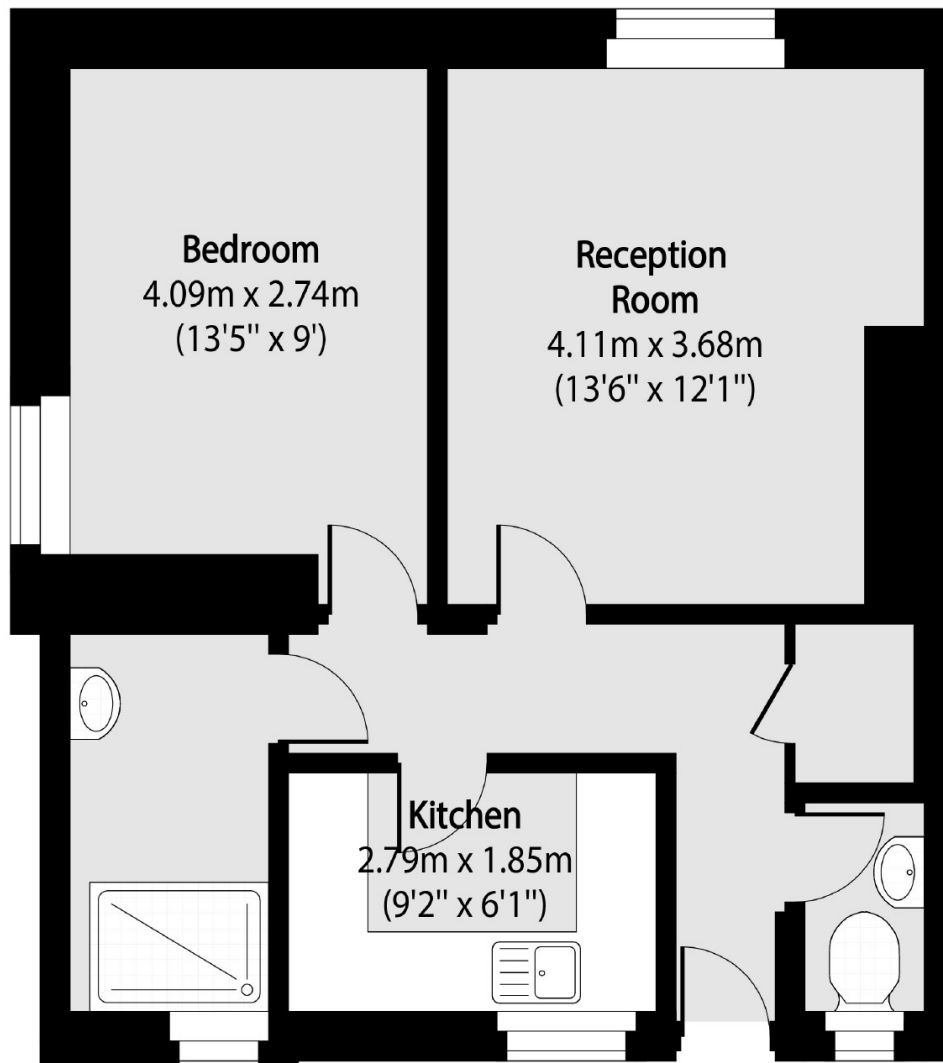
- Double Glazed Windows
- St. Katharine Docks
- Chain Free



Ea2 are pleased to present this one bedroom apartment, within proximity of the picturesque St Katharine's Docks. The property is an ideal for first time or a buy to let investment purchase. Being offered chain free. The perfect property for commuting to the City of London.

Matilda House is within close to St Katherine's Docks offering a wide selection of pubs, bars, restaurants and cafés nearby. Tower Hill Station, DLR links, Wapping Overground Station and bus routes are close for access to the City, London Bridge, Canary Wharf or Shoreditch.





Total area (approx): 47.47 sq m (511 sq. ft)

35A Wapping High Street,
London, E1W 1NR
020 7665 5589
ea2group.com