



Kennet Street, E1W

£520,000

 2  1  1  D

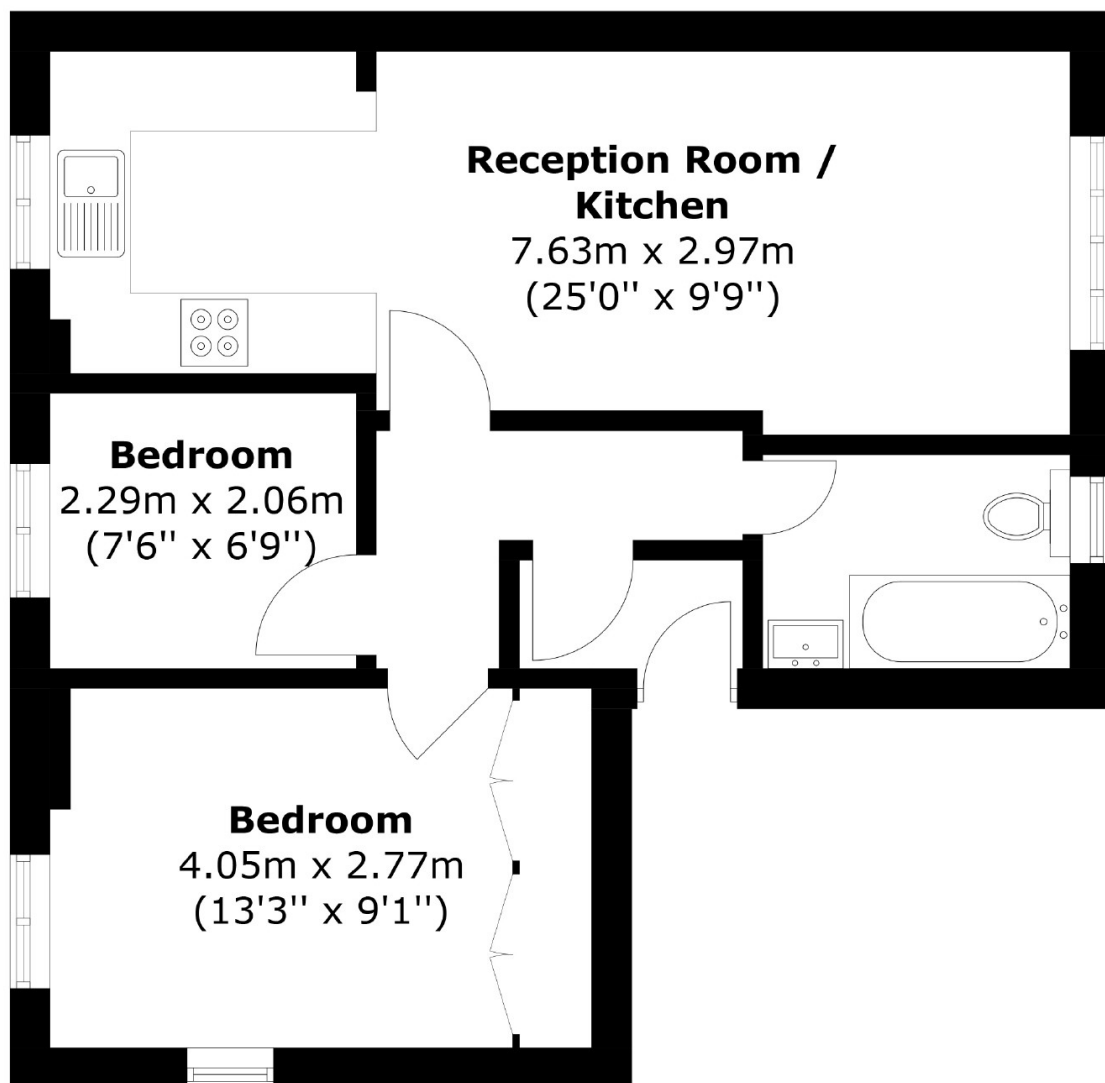
- Gorgeous Views of the Shard
- Open Plan
- Fully Fitted Kitchen
- Garage and Parking
- Top Floor with Loft Access
- Chain Free



This light and airy, modern two bedroom apartment is set in a quiet private development within West Wapping. Features include an open plan reception room, re-fitted bathroom, re-fitted kitchen with modern appliances, separate garage, parking space, loft space access and no onward chain.

Set within walking distance to the vibrant St Katharine's Docks area, the apartment's location is ideal for access to popular bars and restaurants whilst the nearby Tower Hill Underground, Tower Gateway DLR, Shadwell DLR and Wapping Overground offer great links into the City and Canary Wharf.





Second Floor

Total area: Approx. 46.9 sq. meters (504.8 sq. feet)

35A Wapping High Street,
London, E1W 1NR
020 7665 5589
ea2group.com