



## Quebec Way, SE16

### £450,000

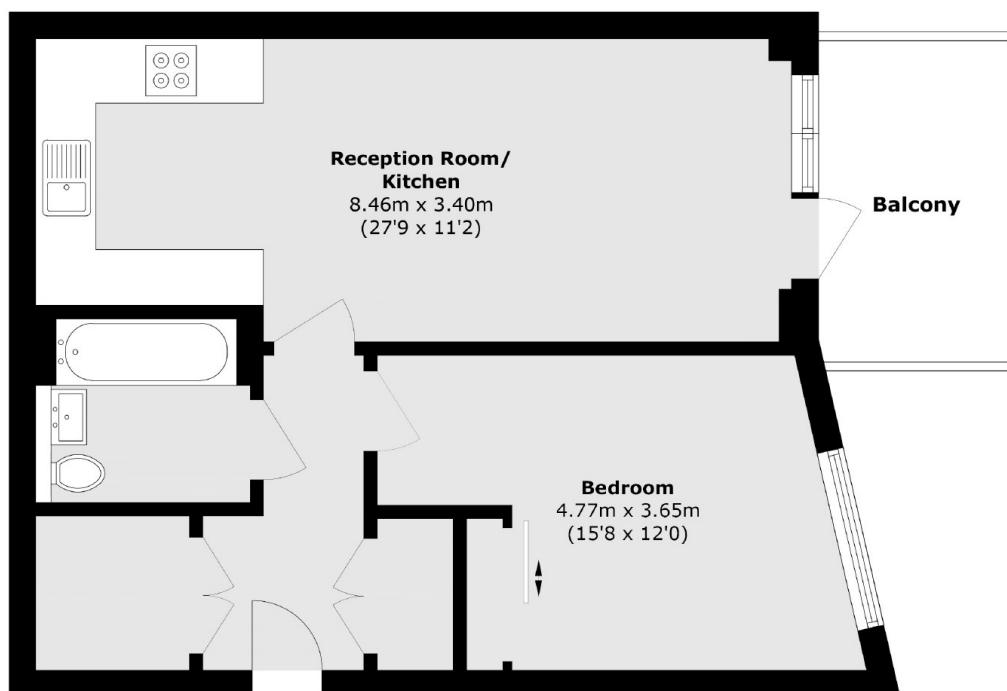
Situated in this sought after development, this one double bedroom south facing apartment is in stunning condition and boasts a very spacious open plan kitchen/ living room, under floor heating, high ceilings, modern bathroom and private balcony.

Elder House is located only 0.5 miles from Surrey Quays station and 0.6 miles from Canada Water station on Quebec Way. A wide range of shops, cafés, restaurants and deli's are close by.

### Features

- Large One Double Bedroom
- Immaculate Condition
- Large Private Balcony
- Long Lease
- Fantastic Location
- South Facing

# Quebec Way, London, SE16



Total area (approx.): 61.4 sq. m (660.9 sq. ft)

Balcony area (approx.): 7.7 sq. m (82.8 sq. ft)