



Aland Court, SE16

£675,000

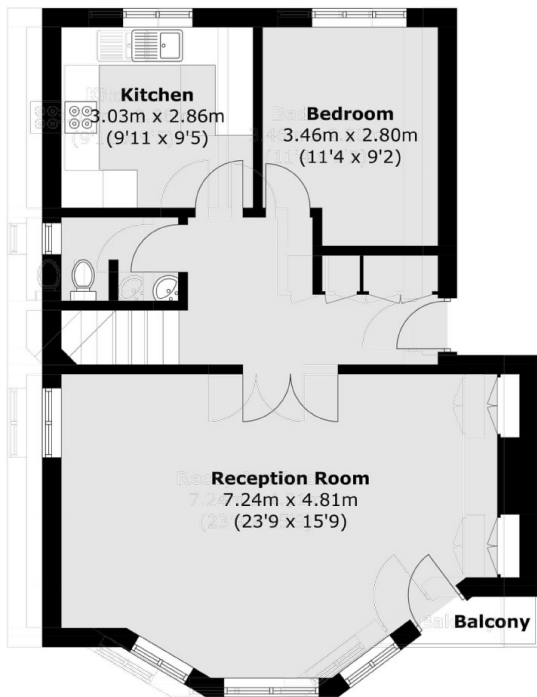
Overlooking Greenland Dock and arranged over 1,200sqft, this split level four bedroom flat is in stunning condition and boasts a large living room, modern kitchen, two bathrooms, additional guest WC, two private balconies and secure parking.

Aland Court is located just 0.6 miles from Surrey Quays station and 0.8 miles from Canada Water station and is surrounded by shops, cafés and riverside restaurants and pubs.

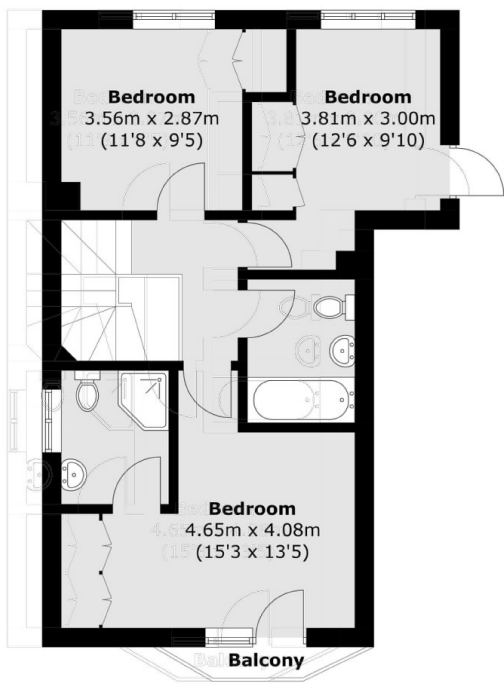
Features

- Four Bedrooms
- Two Bathrooms
- Waterside Location
- Share Of The Freehold
- Secure Parking
- No Chain

Aland Court,
London, SE16



ThThird Floor



FoFourth Floor

Total areTotal area (approx.): 111.5 sq. m (1,200.1 sq. ft)
Balcony Balcony area : 2.3 sq. m (24.7 sq. ft)