



## Howland Way, SE16

£3,750 Per calendar month

Four bedroom house located in a quiet residential street with its own private garden. The property is arranged over three floors with a family bathroom and one en-suite. The kitchen is separate and large reception leads to the garden with decking, patio areas and shed.

Located within walking distance to both Canada Water and Rotherhithe Stations, short walk to Russia Dock Woodlands, Stave Hill, Surrey Docks Farm and Southward Park.

### Features

- Four Bedrooms
- Two Bathrooms
- Furnished
- Garden
- Three Floors
- Separate Kitchen

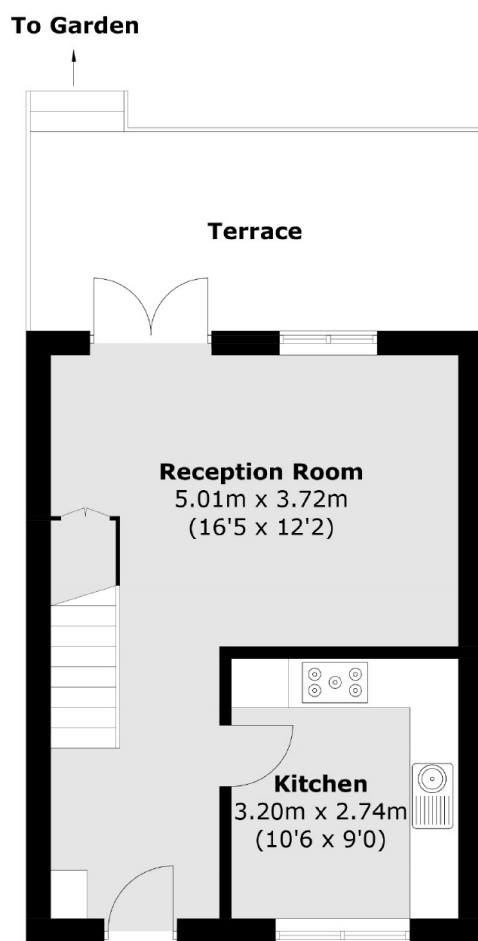




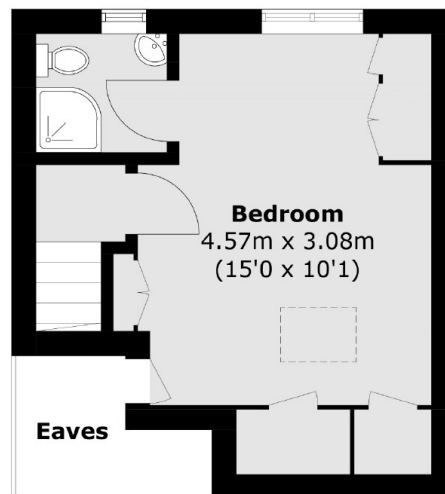
**Howland Way, SE16**



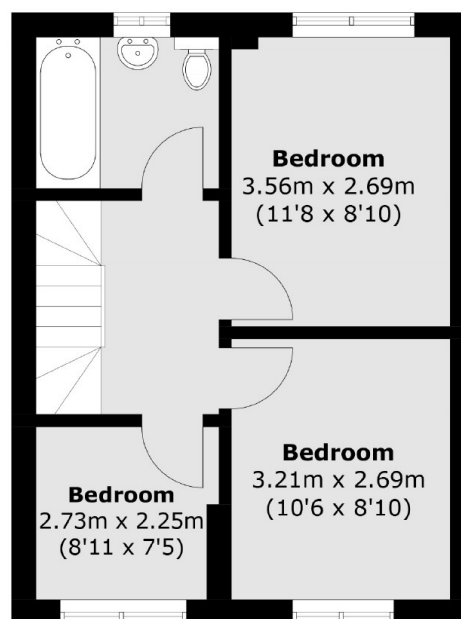
# Howland Way, London, SE16



**Ground Floor**



**Second Floor**



**First Floor**

Total area (approx.): 93.3 sq. m (1,004.1 sq. ft)  
(Excluding Eaves)  
Terrace: 14.1 sq. m (151.7 sq. ft)