



## St. Saviours Estate, SE1

### £230,000

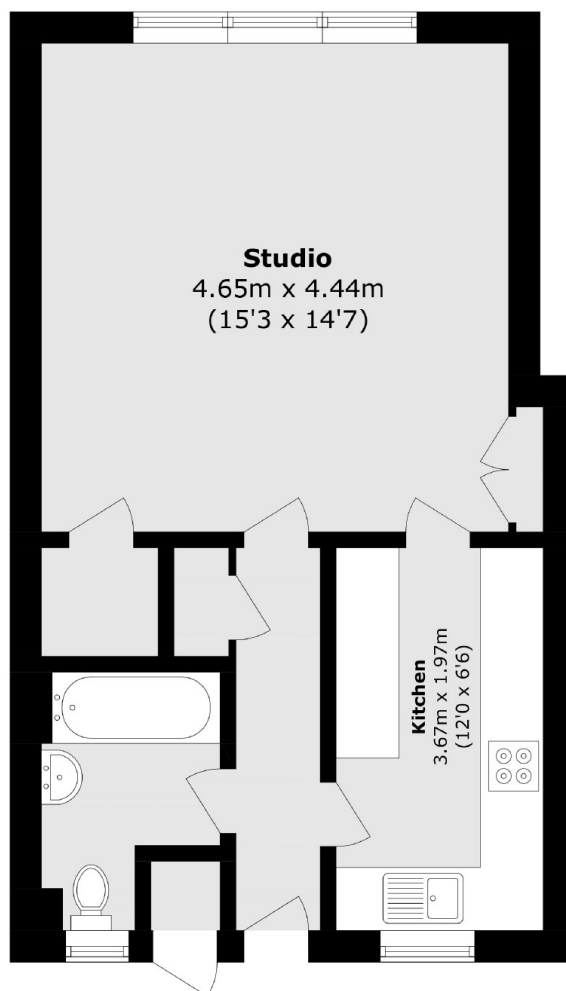
Located in the heart of Bermondsey, this studio apartment boasts a separate kitchen and bathroom, large living/ sleeping space, access to the communal garden and parking.

Breton House is located 0.5 miles from Bermondsey station and 0.8 miles from London Bridge. Maltby Street market is also close by as well as the shops, cafés and restaurants of Bermondsey Street.

### Features

- Studio Apartment
- Parking
- Communal Gardens
- Ample Storage
- Fantastic Location
- Great Transport Links

# St. Saviours Estate, London, SE1



Total area (approx.): 39.1 sq. m (420.8 sq. ft)