



Freda Street, SE16

£585,000

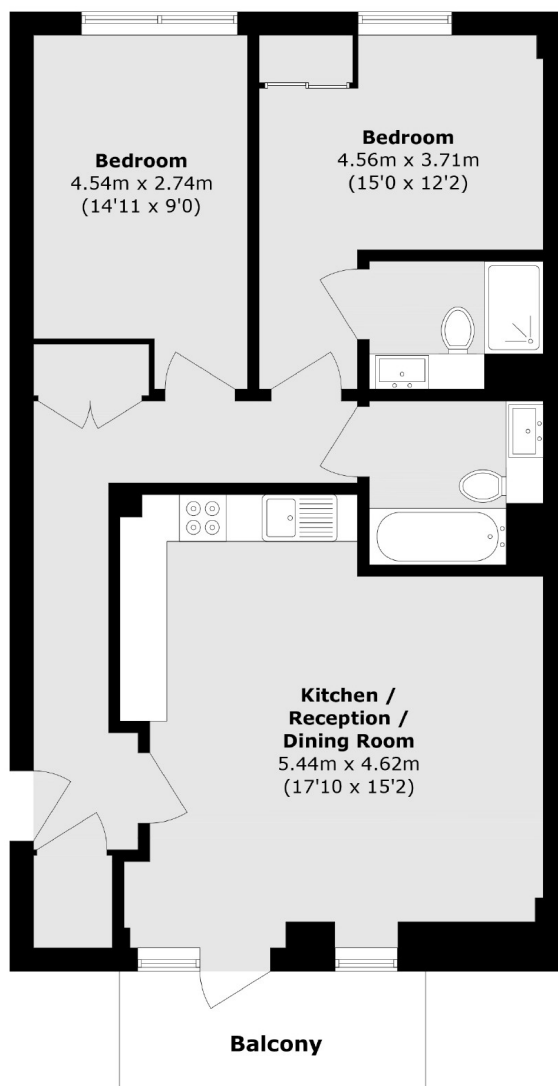
Offering incredible views of the London Skyline, this two double bedroom flat is in stunning condition and boasts a large open plan kitchen living room, two bathrooms, a private balcony, plus secure allocated parking.

Parker Building is only 0.2 miles from Bermondsey station and 0.9 miles from London Bridge Station. Tower Bridge, Shad Thames, the Riverside, Borough Market, Bermondsey Street and Maltby Street Market are all also within easy reach.

Features

- Two Double Bedrooms
- Two Bathrooms
- Fantastic Views
- Private Balcony
- Excellent Transport Links
- Secure Underground Parking

Freda Street, London, SE16



Total area (approx.): 76.4 sq. m (822.3 sq. ft)
Balcony area (approx.): 6.1 sq. m (65.6 sq. ft)