



Plough Way, SE16

£500,000

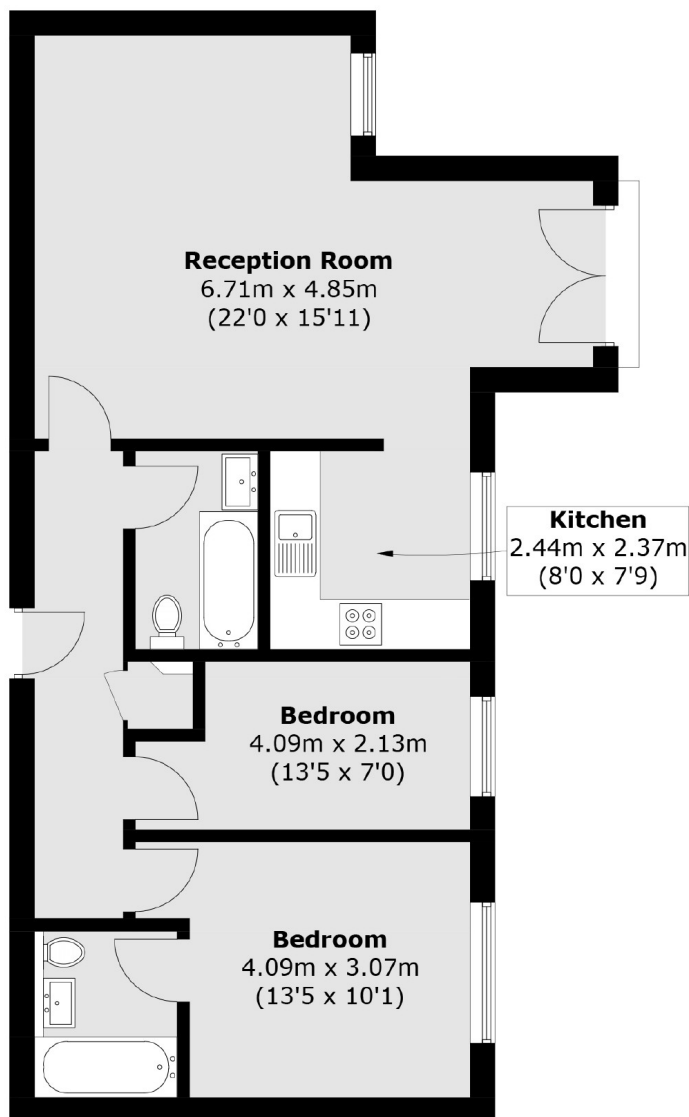
Moments from Greenland Dock and situated in a secure gated development, this two double bedroom flat is in excellent condition and has a large open plan kitchen living space, two bathrooms, allocated parking space, Juliette balcony and ample storage.

Located 0.4 miles from Surrey Quays station and less than a mile to Canada Water station, Iceland Wharf is surrounded by shops, cafés and restaurants.

Features

- Two Double Bedrooms
- Two Bathrooms
- Excellent Condition
- Gated Development
- Allocated Parking Space
- Fantastic Location

Plough Way, London, SE16



First Floor

Total area (approx.): 68.0 sq. m (731.9 sq. ft)