



Russell Place, SE16

£315,000

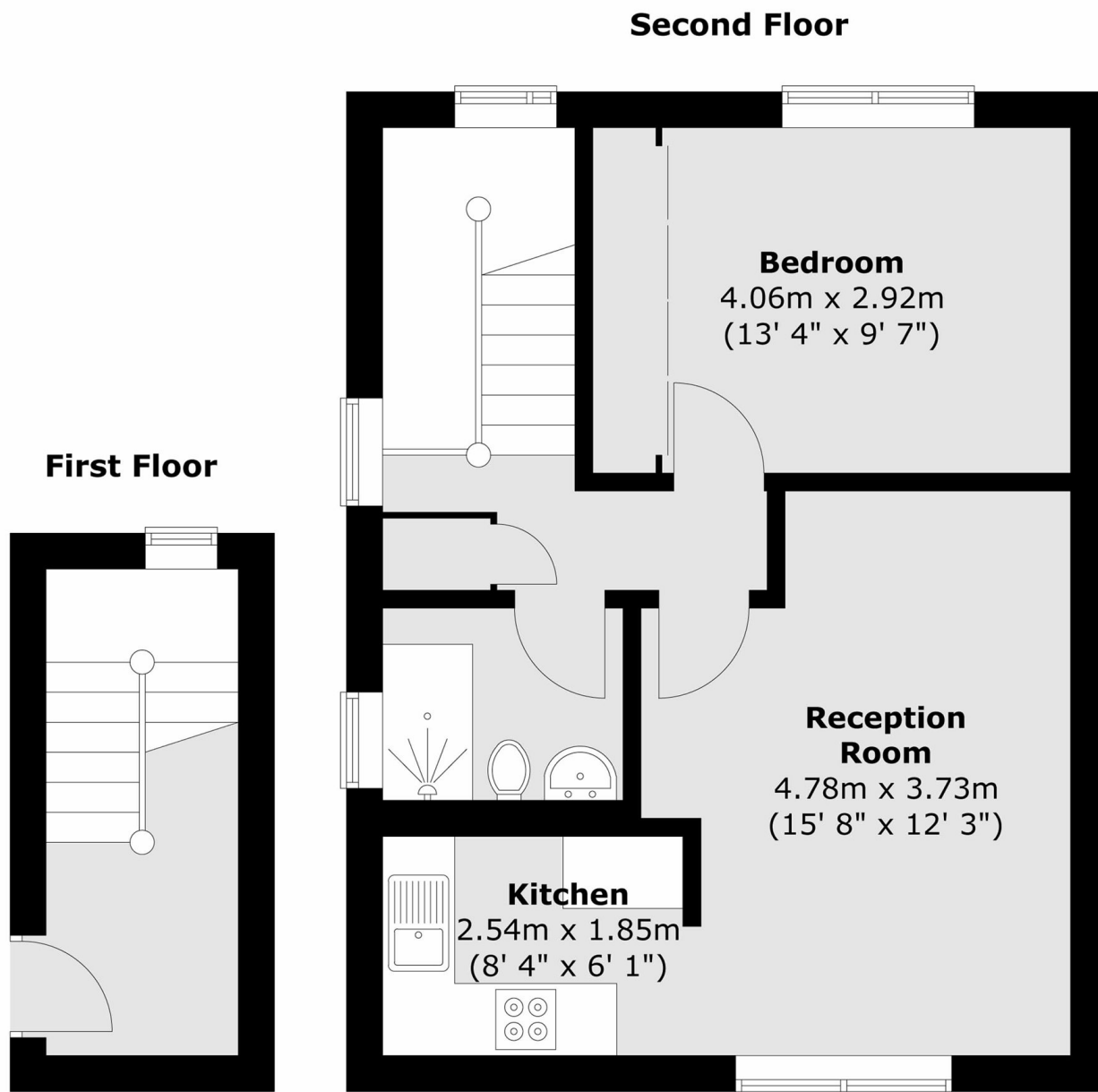
Located moments from the water, this one double bedroom flat is immaculately presented and boasts a spacious open plan kitchen/ living area, modern bathroom, ample storage and secure parking.

Located only 0.6 miles from Surrey Quays station and 0.8 miles from Canada Water station, Russell Place is surrounded by shops, cafés and riverside restaurants and pubs and is situated alongside Greenland dock and Russia Docks woodland.

Features

- One Bedroom
- Split Level
- Fantastic Condition
- Allocated Parking
- Excellent Location
- Long Lease

Russell Place, London, SE16



Total area (approx.) : 52.5 sq. m (565 sq. ft)