



Evelyn Street, SE8

£340,000

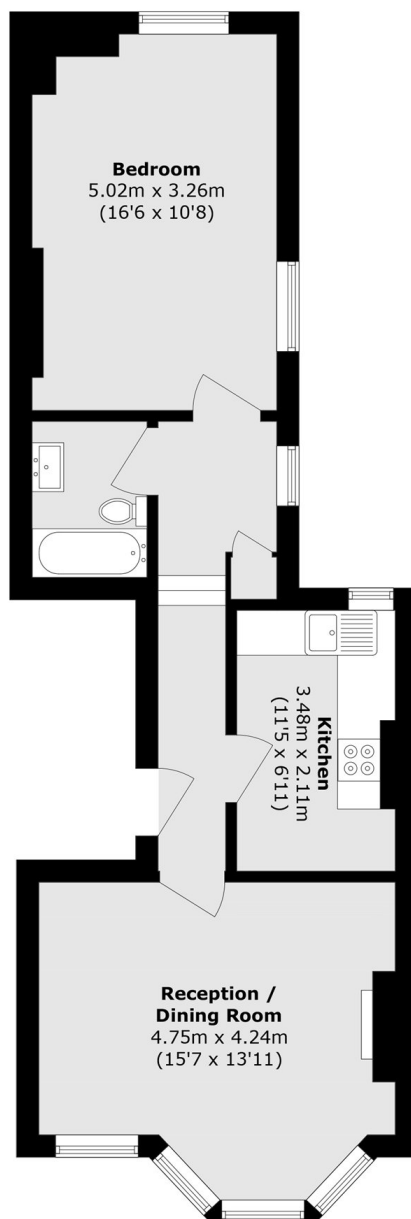
Situated on the first floor of this beautiful period property, this one double bedroom flat boasts a large living space with stunning period features, separate kitchen, modern bathroom, ample storage and is being sold chain free.

Evelyn Street is conveniently located only 0.3 miles from Surrey Quays station offering fantastic transport links to all of London. A wide range of restaurants, shops and cafés along with Deptford Park are moments away.

Features

- One Double Bedroom Flat
- Chain Free
- Fantastic Location
- Period Conversion
- First Floor Flat
- Period Features

Evelyn Street, LONDON, SE8



Total area (approx.): 53.5 sq. m (575.8 sq. ft)