



Rotherhithe Street, SE16

£650,000

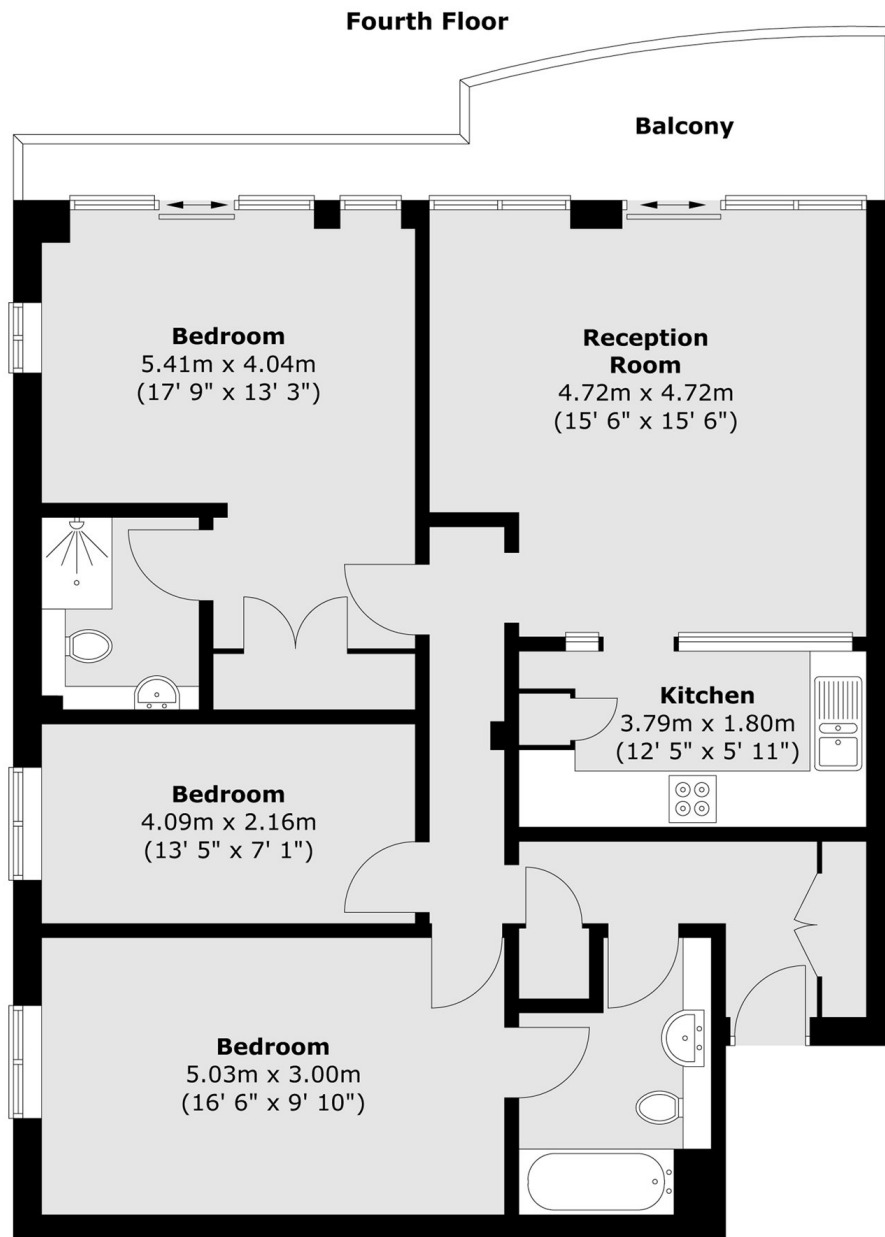
Offering stunning views of the river and Canary Wharf, this three double bedroom flat is immaculately presented and boasts a large balcony, semi open plan kitchen living space, two bathrooms and secure parking.

Harwood Point is located only 0.7 miles from Rotherhithe station and 0.7 miles from Canada Water station. An abundance of riverside pubs, shops and restaurants are all close by.

Features

- Three Double Bedrooms
- Two Bathrooms
- River Views
- Private Balcony
- Chain Free
- Parking

Rotherhithe Street, London, SE16



Total area (approx.) : 93.2 sq. m (1003 sq. ft)
Total balcony area (approx.) : 9.3 sq. m (100 sq. ft)