



## Plough Way, SE16

### £680,000

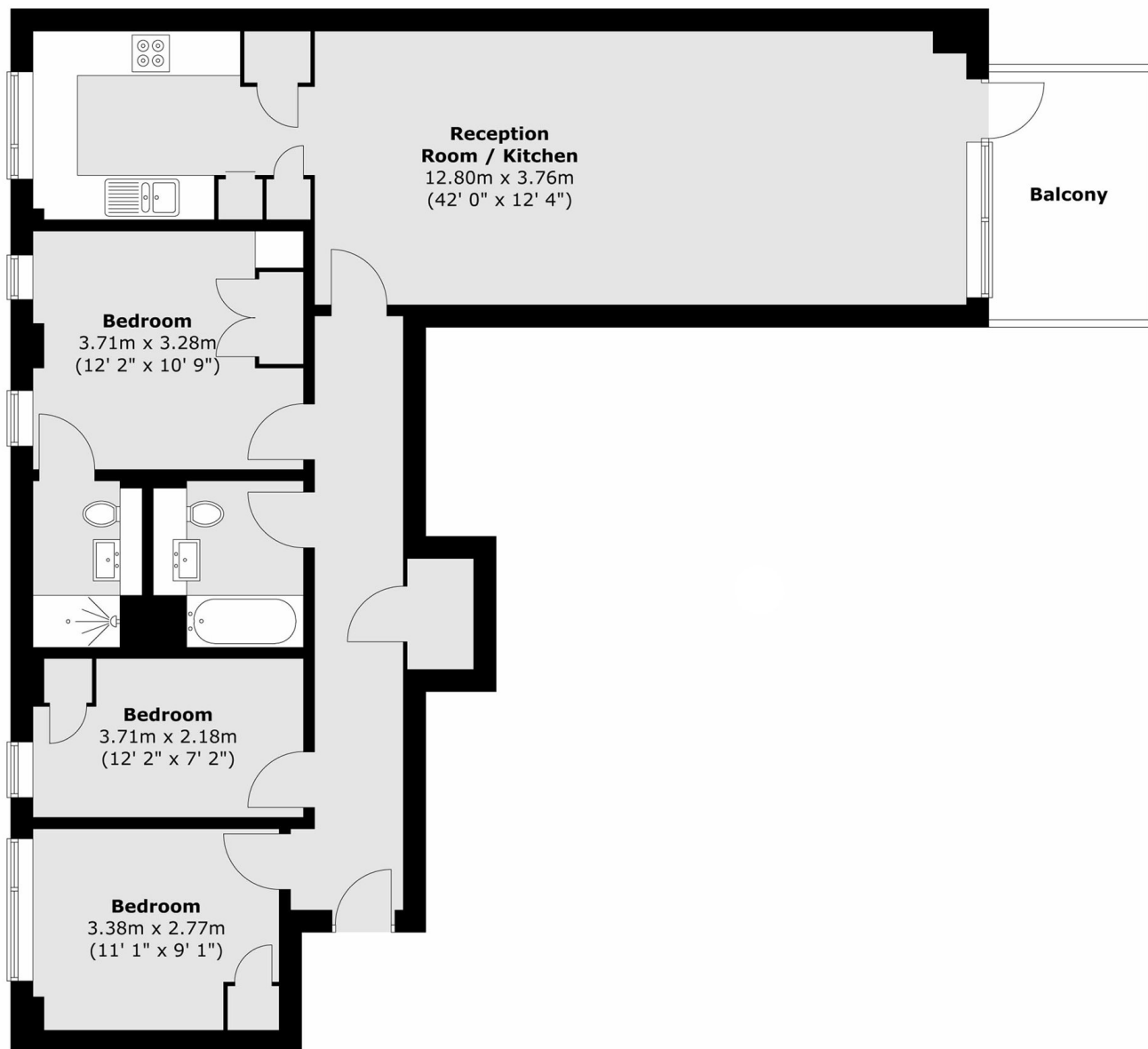
Arranged over 1,000 sqft, this light and airy three double bedroom flat is in stunning condition and boasts a huge 42ft open plan kitchen living area, two bathrooms, large private balcony and concierge facilities.

Aurora Point is only 0.4 miles from Surrey Quays station and 0.8 miles to Canada Water station offering excellent transport links to anywhere in London. A wide range of shops, cafés and restaurants are on the doorstep.

### Features

- Three Double Bedrooms
- Two Bathrooms
- Concierge Facilities
- Large Private Balcony
- Excellent Condition
- Fantastic Location

# Plough Way, London, SE16



Total area (approx.) : 97.7 sq. m (1052 sq. ft)  
Total balcony area (approx.) : 7.5 sq. m (81 sq. ft)