



## Albatross Way, SE16

£2,050 Per week

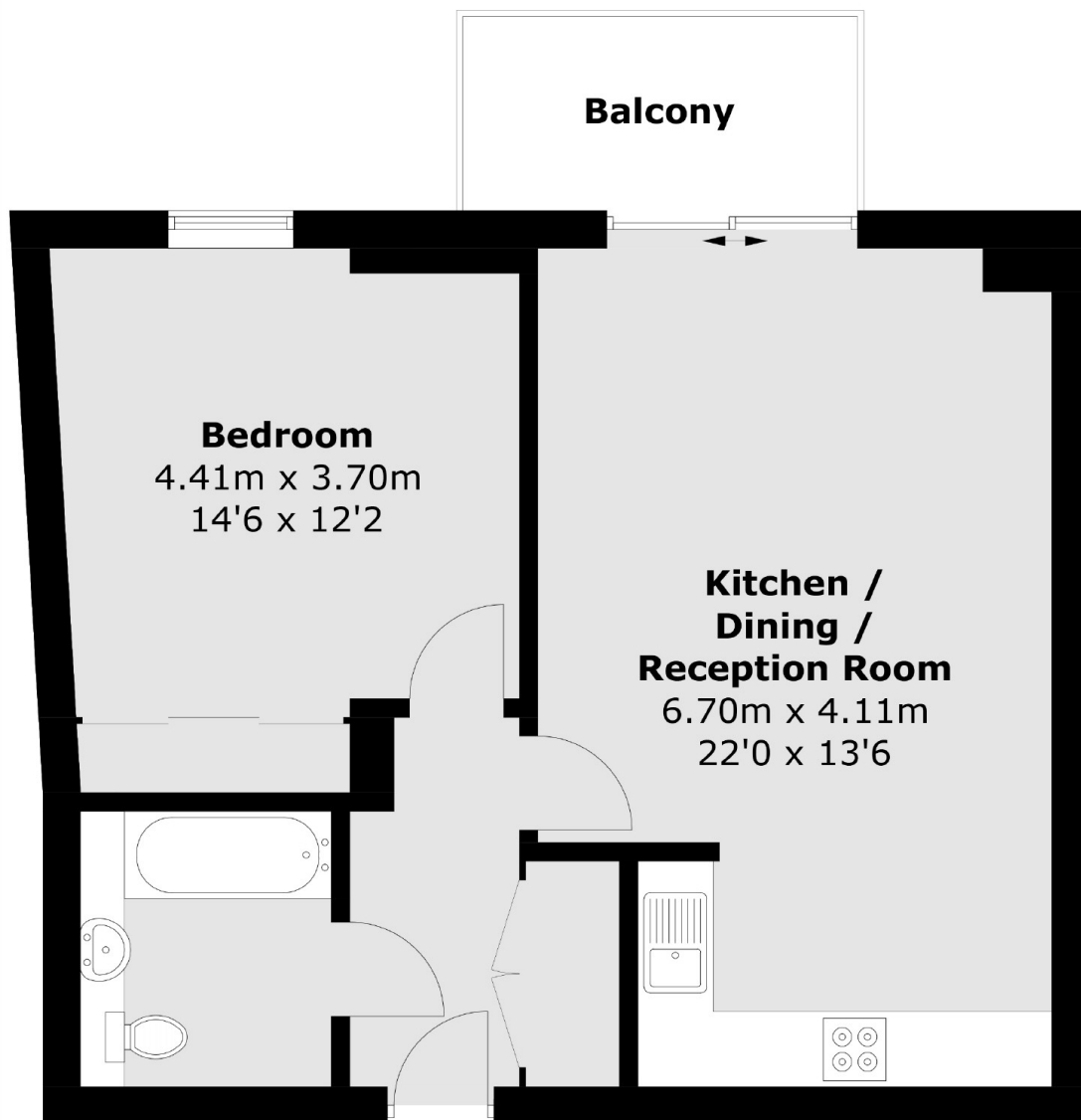
A one double bedroom located in this modern development. Well-presented throughout and boasts a large open plan kitchen living space, wood flooring throughout and private balcony with views across the City. The development also has access to a 24hr concierge, gym facilities and access to communal roof terrace to see London's skyline.

Brampton House is part of the Maple Quays development in Canada Water. There are numerous restaurants and shops in the immediate vicinity and Canada Water Underground provides easy access to the City or Canary Wharf.

### Features

- One Bedroom
- Balcony
- Views of the Shard
- Communal Roof Terrace
- Gym & Concierge
- Canada Water

# Albatross Way, London, SE16



Total area (approx.): 52.9 sq. m (569.4 sq. ft)  
Balcony: 4.9 sq. m (52.7 sq. ft)

## Dexters

Canada Water  
Montreal House  
Surrey Quays Road  
London  
Lettings  
020 7650 5145

Energy Rating: B. We aim to make our particulars both accurate and reliable. However they are not guaranteed; nor do they form part of an offer or contract. If you require clarification on any points then please contact us, especially if you're traveling some distance to view. Please note that appliances and heating systems have not been tested and therefore no warranties can be given as to their good working order.

 **RICS** | Regulated  
Estate Agent  
and Letting Agent

[dexters.co.uk](https://www.dexters.co.uk)