



George Beard Road, SE8

£2,400 Per calendar month

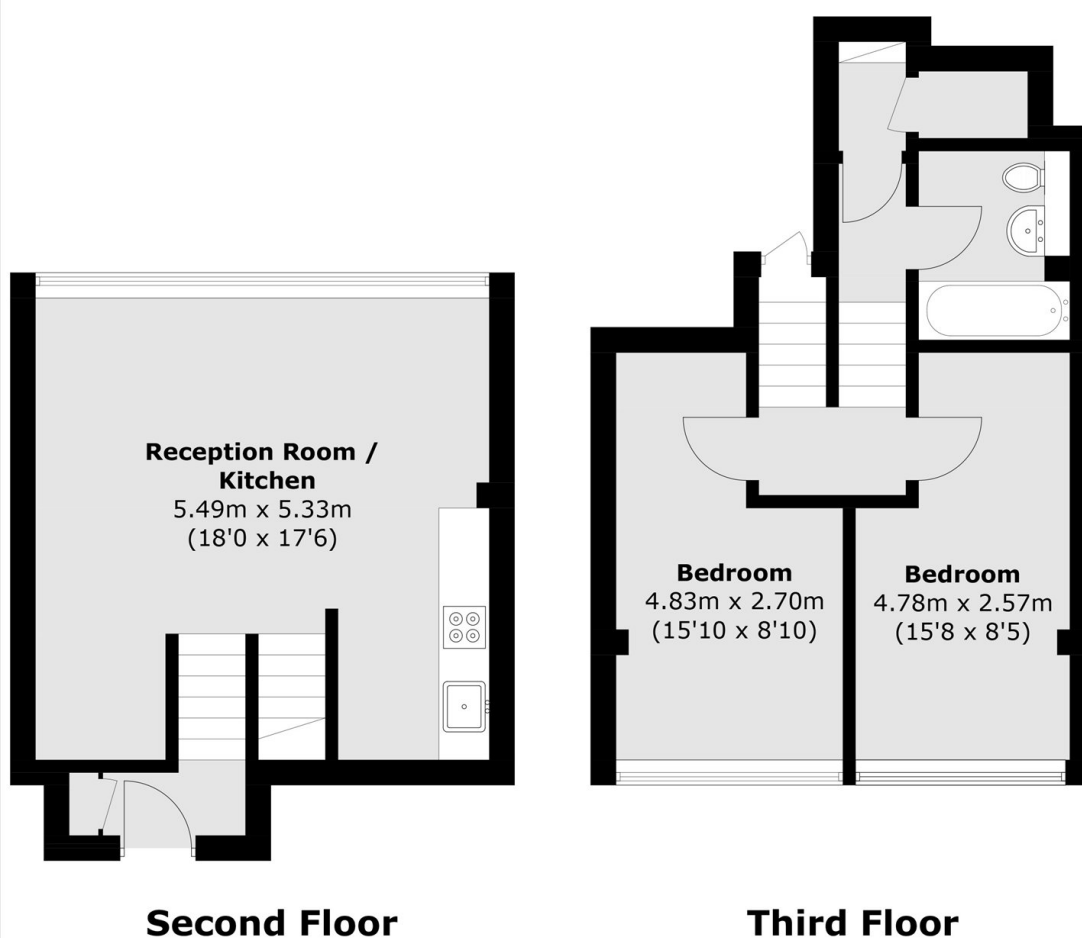
SHORT LET - Set on the second and third floor, this split-level property has two double bedrooms, one bathroom and an open plan kitchen and living space. The property is offered on a Short Let basis with utilities included.

Located within a mile of Canada Water station and Surrey Quays station, Aragon Tower offers an easy commute to Canary Wharf and The City. Thames Clipper river boat is close by, providing services to Central London and Greenwich.

Features

- Short Let
- Two Double Bedrooms
- Concierge Facilities
- Excellent Condition
- Incredible Views
- Riverside location

George Beard Road, London, SE8



Total area (approx.): 67.8 sq. m (729.8 sq. ft)