



## Fisher Close, SE16

### £450,000

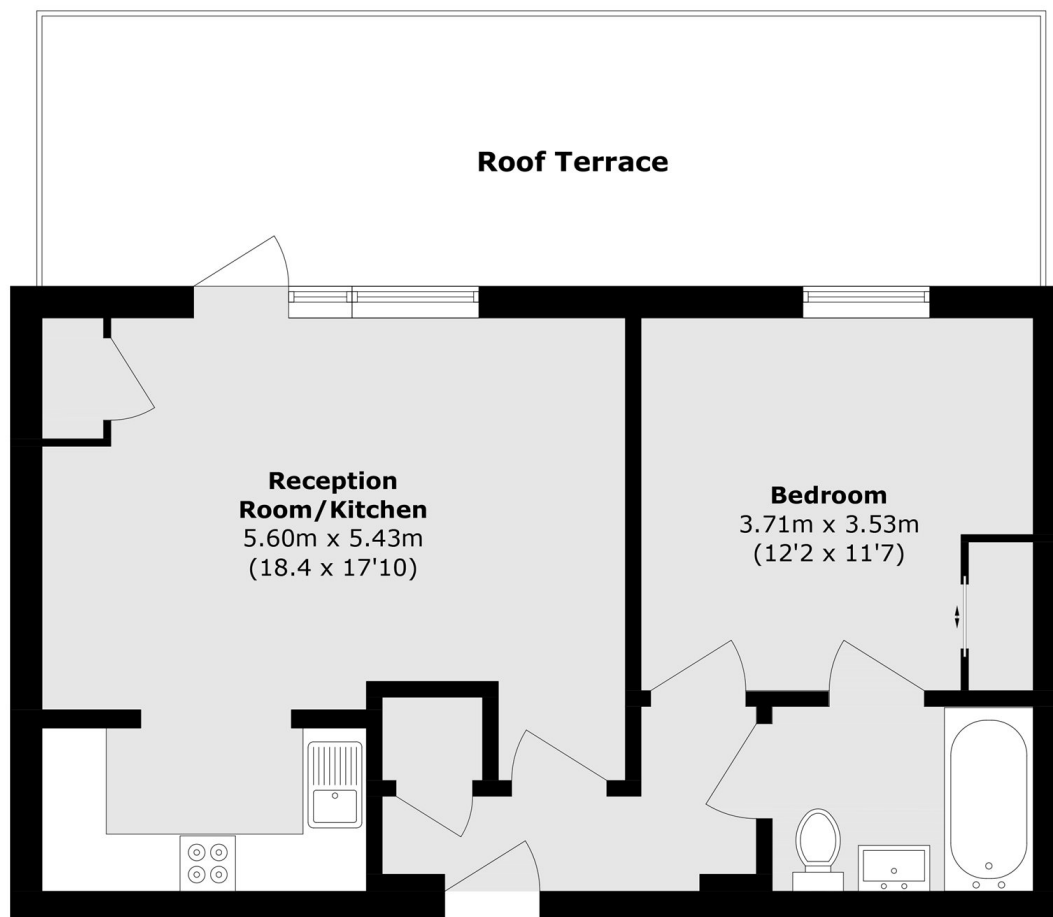
With a stunning private roof terrace overlooking the park, this one double bedroom penthouse apartment is in stunning condition, offering ample living space, modern kitchen and bathroom, ample storage and is being sold chain free.

Fisher Close is located 0.5 miles from Rotherhithe station and 0.7 miles from Canada Water station offering excellent transport links to anywhere in London. The River Thames and Surrey Water are both close by.

### Features

- One Double Bedroom
- Penthouse Apartment
- Private Roof Terrace
- Beautiful Condition
- Great Location
- Chain Free

# Fisher Close, London, SE16



Total area (approx.): 51.0 sq. m (548.9 sq. ft)  
Roof Terrace area (approx.): 24.1 sq. m (259.4 sq. ft)