



## Tower Bridge Road, SE1

### £695,000

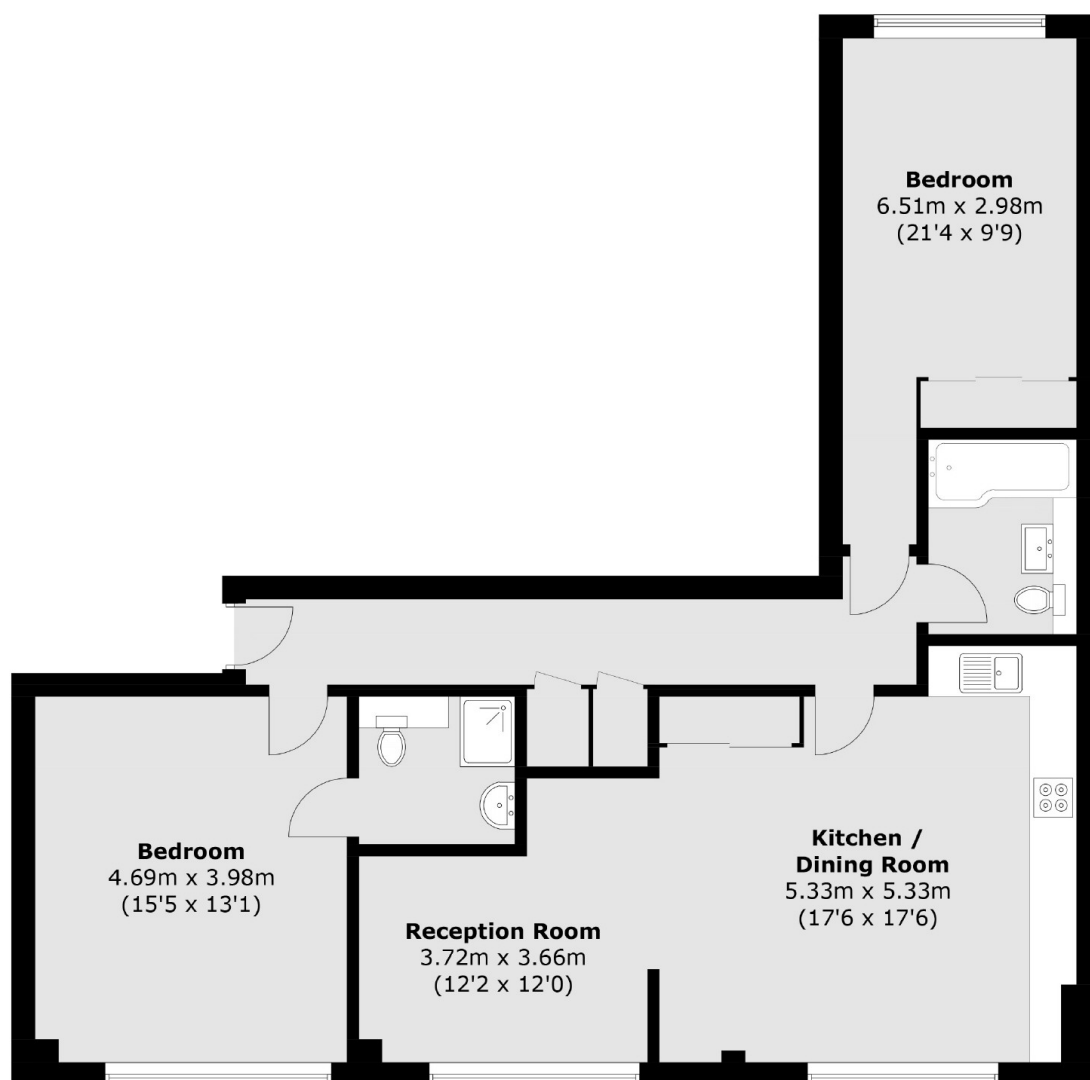
Situated in a stunning period building, this two double bedroom flat is immaculately presented throughout and boasts two modern bathrooms, a large open plan kitchen living space and ample storage.

The apartment is located moments from Bermondsey Street and Maltby Street as well as a wide range of shops, artisan delis and eateries. London Bridge station is located 0.7 miles away offering excellent transport links to all of London.

### Features

- Two Double Bedrooms
- Two Bathrooms
- Fantastic Condition
- Excellent Location
- Period Building
- Chain Free
- OIEO £750,000

# Tower Bridge Road, London, SE1



Total area (approx.): 97.8 sq. m (1,052.7 sq. ft)

## Dexters

Canada Water  
Montreal House  
Surrey Quays Road  
London  
Sales  
020 7650 5144

Energy Rating: C. We aim to make our particulars both accurate and reliable. However they are not guaranteed; nor do they form part of an offer or contract. If you require clarification on any points then please contact us, especially if you're traveling some distance to view. Please note that appliances and heating systems have not been tested and therefore no warranties can be given as to their good working order.

 **RICS** | Regulated  
Estate Agent  
and Letting Agent

[dexters.co.uk](https://www.dexters.co.uk)