



## Quebec Way, SE16

£3,550 Per week

A contemporary and bright three double bedroom flat within Canada Water's premier development. This immaculately presented property is located close to the Jubilee Line, but within a very peaceful setting.

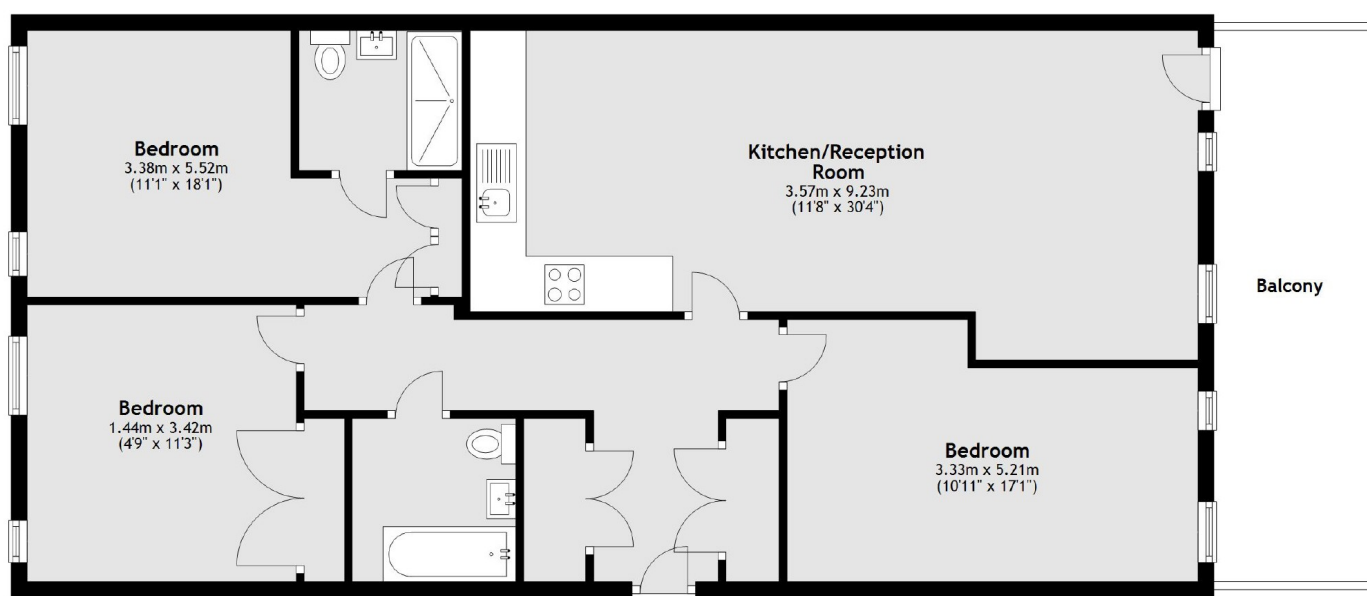
Maple Quays is an upmarket new build development in the heart of Surrey Quays. Canada Water Station which is on the Jubilee Line and the London Overground is just short walk from the property.

### Features

- Three Double Bedrooms
- Two Bathrooms
- Wood Flooring
- Balcony
- Canada Water

# Quebec Way, London, SE16

## Third Floor



Total area: approx. 104.1 sq. metres (1120.9 sq. feet)