



Odessa Street, SE16

£2,500 Per calendar month

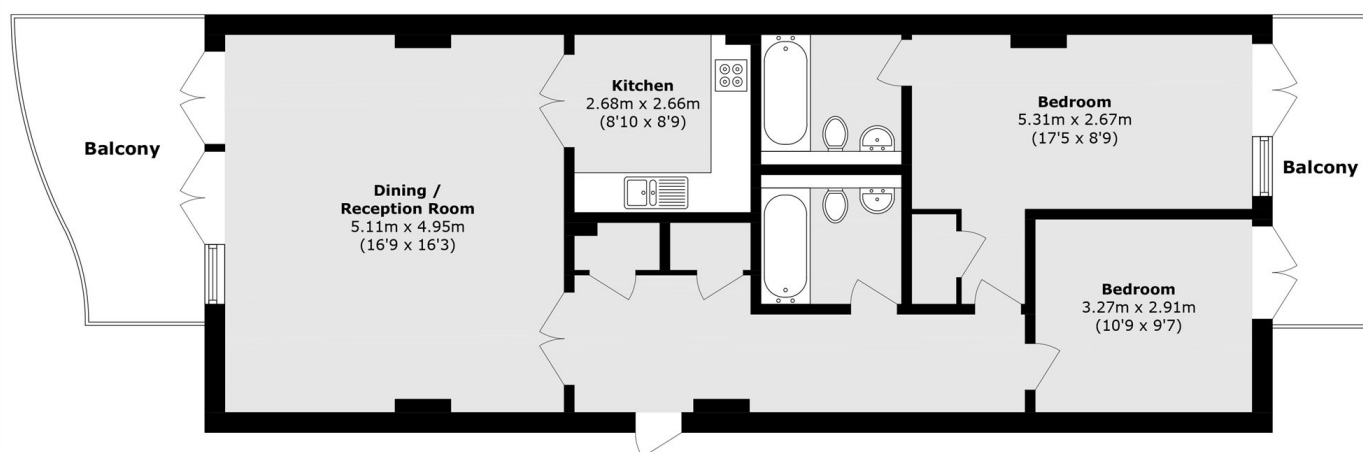
A spacious two double bedroom, two bathroom apartment, located in this riverside development on the Thames. On site facilities include a concierge and a swimming pool.

New Caledonian Wharf is a sought after new build development overlooking the river below. There are easy bus links to Canada Water Station which is on the Jubilee Line. Surrey Quays shopping is also just a short walk from the property.

Features

- Two Double Bedrooms
- Two Bathrooms
- River Views
- Concierge
- Gym
- Swimming Pool

Odessa Street, London, SE16



Total area (approx.): 88.0 sq. m (947.2 sq. ft)

Balcony total (approx.): 18.4 sq. m (198.0 sq. ft)