



Norton Gardens, SW16  
£475,000

**Dexters**





## Norton Gardens, SW16

Norton Gardens is a highly desirable residential location. It's central location means you are conveniently located from local amenities, parks and transport. Situated just 0.6 miles from Norbury station which offers excellent links into Central London.

### Features

- 1930's Terraced house
- Three bedrooms
- Open plan kitchen/diner
- Garden
- Close to transport
- Energy rating: D





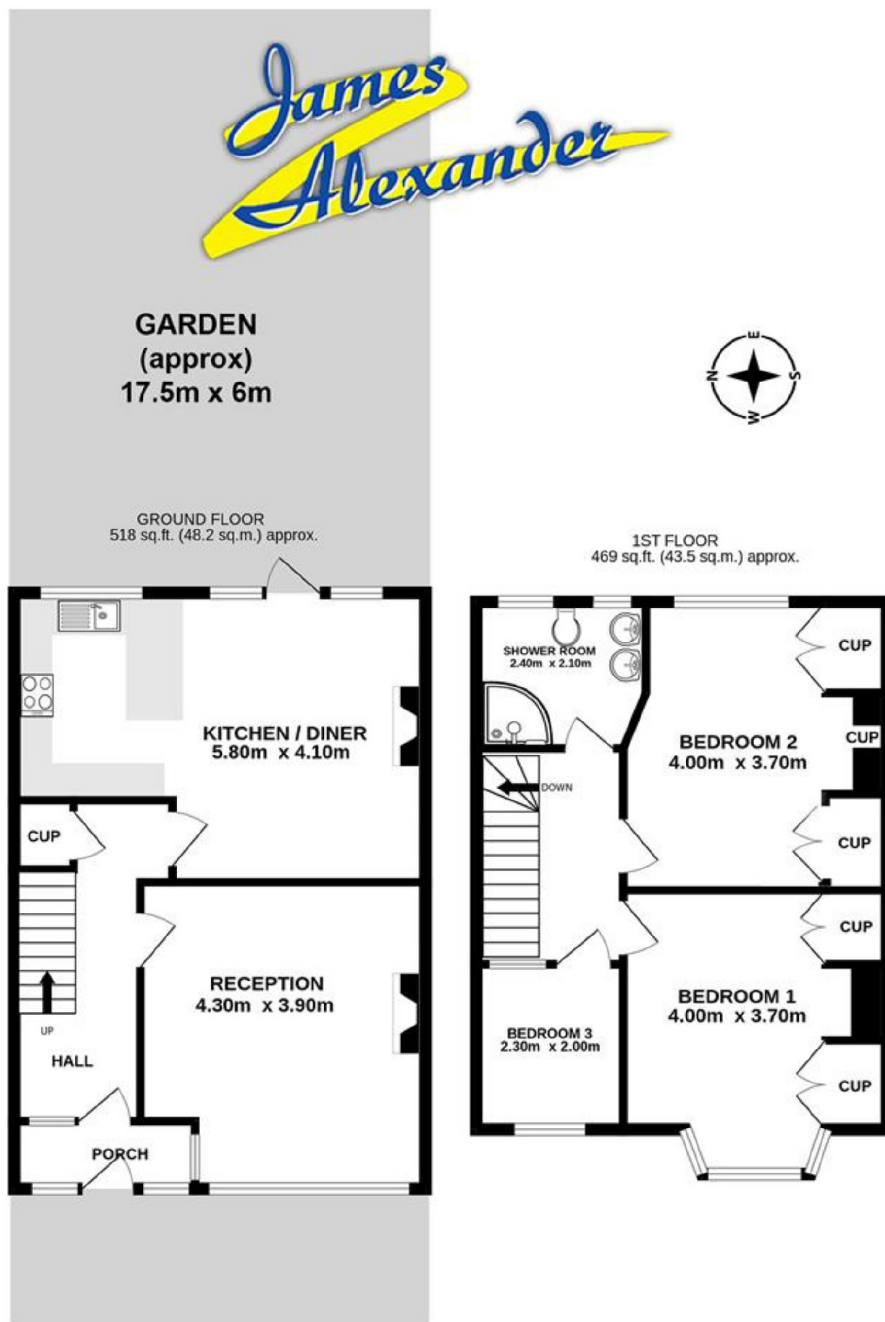








# Norton Gardens, London, SW16



Whilst every attempt has been made to ensure the accuracy of the floorplan contained here, measurements of doors, windows, rooms and any other items are approximate and no responsibility is taken for any error, omission or mis-statement. This plan is for illustrative purposes only and should be used as such by any prospective purchaser. The services, systems and appliances shown have not been tested and no guarantee as to their operability or efficiency can be given.  
Made with Metropix ©2024

## Dexters

Norbury  
1341 London Road  
Norbury  
SW16 4BE  
Sales  
020 8629 8028

Energy Rating: D. We aim to make our particulars both accurate and reliable. However they are not guaranteed; nor do they form part of an offer or contract. If you require clarification on any points then please contact us, especially if you're traveling some distance to view. Please note that appliances and heating systems have not been tested and therefore no warranties can be given as to their good working order.

**RICS** Regulated  
Estate Agent  
and Letting Agent

dexters.co.uk