



Grove Road, CR7

£450,000

Located in the popular Grove Estate in Thornton Heath is this three bedroom, terraced house. This property offers a spacious reception room as well as a separate kitchen. The first floor hosts two generous double bedrooms as well as a further smaller single. This property benefits from a South West facing garden with a private garage and no onward chain.

Grove Road is situated just a short distance from the amenities of London Road, including coffee shops, restaurants and supermarkets. It is also located just over 1 mile from Norbury overground station which offers excellent transport links into central London.

Features

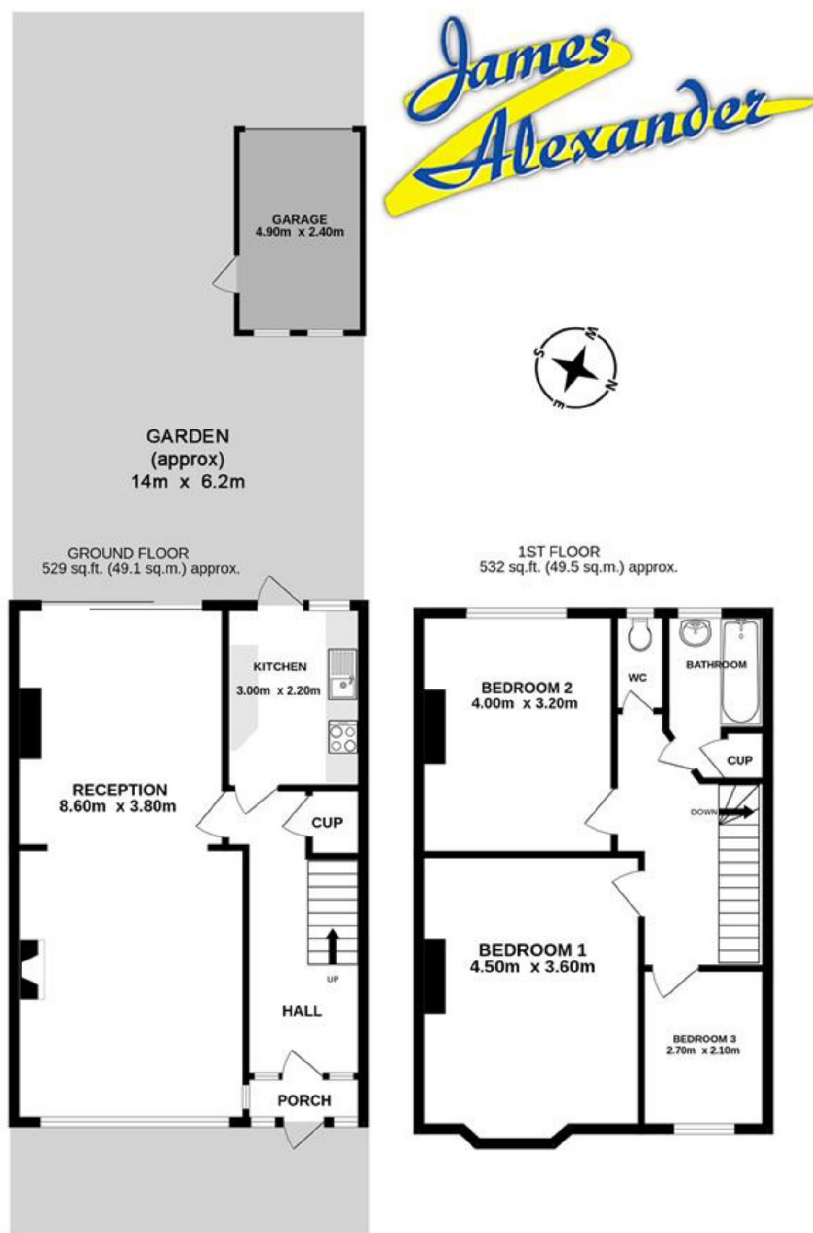
- Terraced house
- Three bedrooms
- Garage
- South West facing garden
- No onward chain
- Energy rating: C



Grove Road, CR7



Grove Road,
Thornton Heath, CR7



Whilst every attempt has been made to ensure the accuracy of the floorplan contained here, measurements of doors, windows, rooms and any other items are approximate and no responsibility is taken for any error, omission or mis-statement. This plan is for illustrative purposes only and should be used as such by any prospective purchaser. The services, systems and appliances shown have not been tested and no guarantee as to their operability or efficiency can be given.
Made with Metropix ©2025

Dexters

Norbury
1341 London Road
Norbury
SW16 4BE
Sales
020 8629 8028

Energy Rating: C. We aim to make our particulars both accurate and reliable. However they are not guaranteed; nor do they form part of an offer or contract. If you require clarification on any points then please contact us, especially if you're traveling some distance to view. Please note that appliances and heating systems have not been tested and therefore no warranties can be given as to their good working order.

RICS | Regulated
Estate Agent
and Letting Agent

dexters.co.uk