



Heathview Road, CR7

£495,000

A well presented, four bedroom Victorian family home retaining many of the original features. Energy rating: C

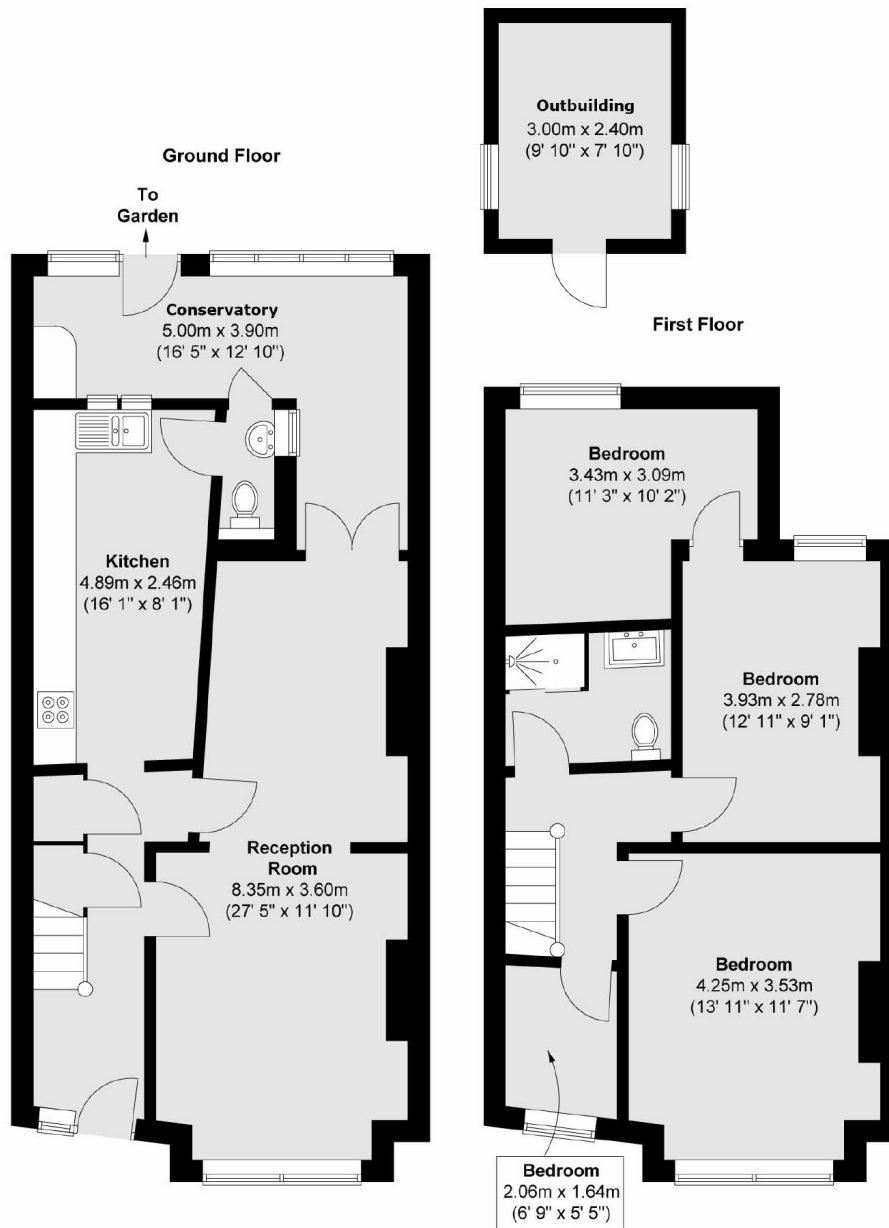


The accommodation comprise a entrance hall leading to the through reception room, extended kitchen, guest w.c and conservatory/utility room. Upstairs are three double bedrooms, single bedroom, family bathroom and loft access. The rear garden is fully paved and south facing.

Heathview Road is conveniently situated 1.1 miles from Norbury station and 0.8 miles from Thornton Heath station. Norbury town centre offers a variety of local restaurants and shops. The property also benefits from easy access to local schools, including state and grammar schools, and the open green space of Pollards Hill, making it an ideal location for families.

Victorian home, Four bedrooms, Period features, Through reception room, South facing garden, EPC C





Total area (approx.) : 111.3 sq. m (1198 sq. ft)
 Total outbuilding area (approx.) : 7.2 sq. m (77 sq. ft)

James Alexander
 1341 London Road,
 Norbury, SW16 4BE
 020 8629 8029
norburylettings@jamesalexander.com

Energy Rating: C We aim to make our particulars both accurate and reliable. However they are not guaranteed; nor do they form part of an offer or contract. If you require clarification on any points then please contact us, especially if you're travelling some distance to view. Please note that appliances and heating systems have not been tested and therefore no warranties can be given as to their good working order.