



Northborough Road, SW16  
£695,000

**Dexters**



## Northborough Road, SW16

A recently refurbished, modern four bedroom family home with a double reception, loft extension and garden room.

This beautifully presented family home offers spacious and well-designed accommodation across three floors. The ground floor features two reception rooms, a convenient guest W.C, with a fitted kitchen, leading to the garden. The first floor boasts three generously sized bedrooms and a family bathroom. The top floor has been converted to a large bedroom with its own bathroom. To the rear, the property presents a low-maintenance paved garden.

Northborough Road is conveniently located 0.9 miles from Norbury mainline station offering excellent transport links to London Bridge and Victoria. The area is well equipped with accessible bus routes, a variety of amenities along with good schools, making it an ideal location for families.

### Features

- Four bedrooms
- Modern condition
- Garden room
- Two reception rooms
- EPC: C



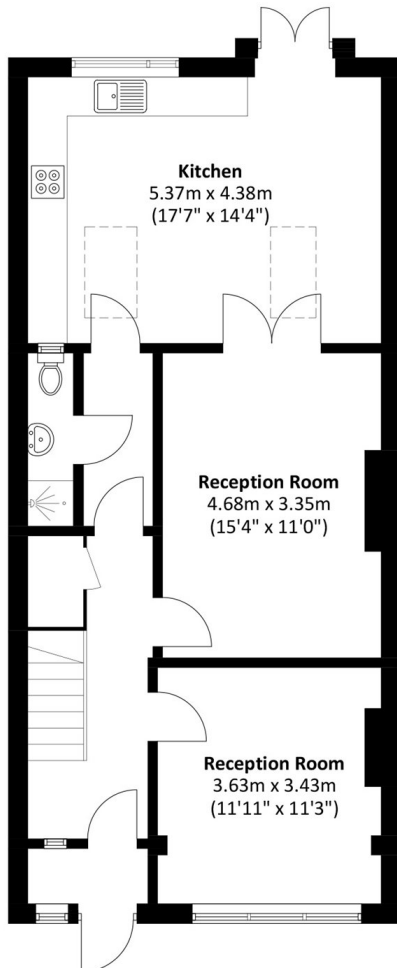




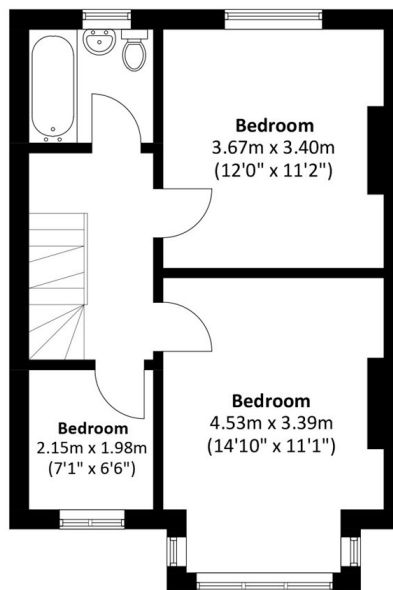




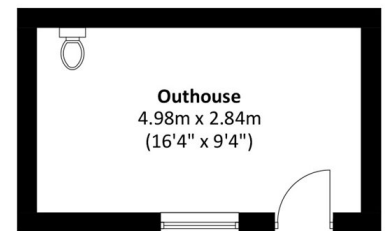
# Northborough Road, London, SW16



Ground Floor

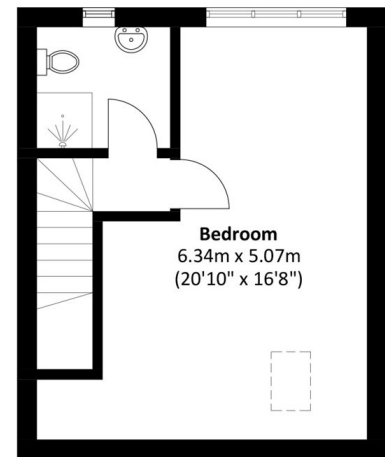


First Floor



(Not Shown In Actual Location / Orientation)

Outbuilding



Second Floor

Total area: Approx. 144.1 sq. meters (1,550.9 sq. feet)  
Outbuilding: Approx. 14.3 sq. meters (153.9 sq. feet)