



London Road, SW16

£400,000

A beautifully presented, two double bedroom flat in Solent Court development located just 0.6 miles From Norbury station.

Solent Court is set just off Norbury town centre. The nearest mainline station, Norbury, is only 0.6 Miles away, offering regular rail services to London Bridge and London Victoria. The area is well served by highly regarded schools, with Norbury Park and Streatham Common also nearby, providing excellent recreational facilities.

Features

- Two bed apartment
- Gym & Concierge
- 0.6 miles to station
- Modern finish
- Communal gardens & terrace
- Energy rating: D



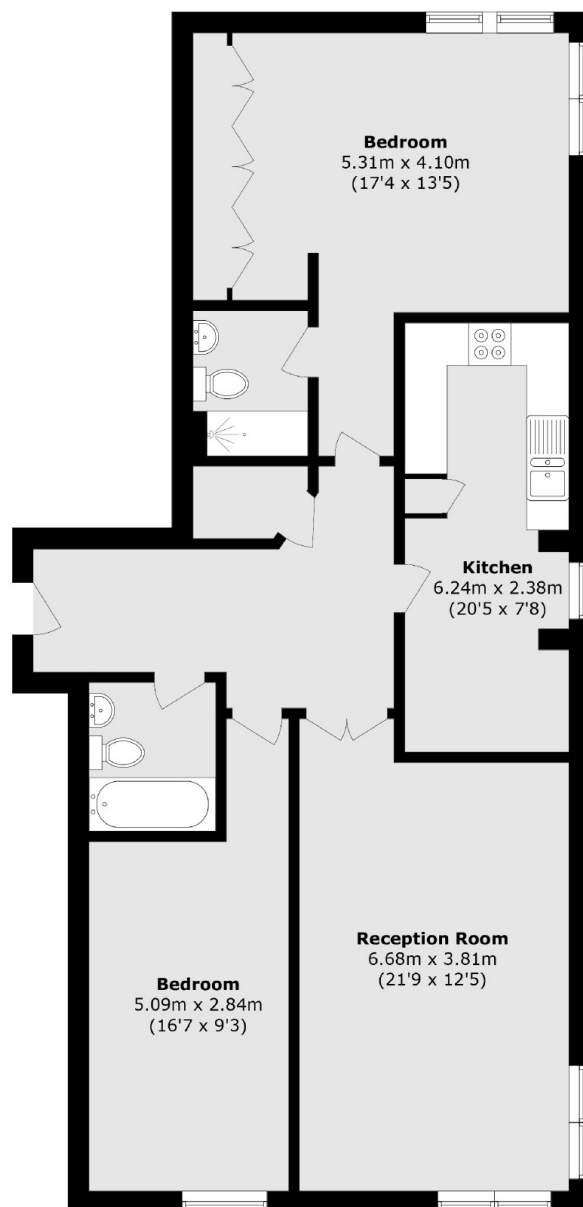
London Road, SW16

The apartment has two double bedrooms, two bathrooms, one en suite and one family bathroom, double glazing, pressurised water system and integrated appliances including washing machine and dishwasher.

The development has the added benefit of remote underground parking a concierge and a communal gardens, roof terrace & gym all providing a great sense of community. The flat has been maintained to a high standard by its current owners and has a great deal of light streaming in from the many windows.



London Road,
London, SW16



Total area (approx.): 101.7 sq. m (1094.7 sq. ft)

Dexters

Norbury
1341 London Road
Norbury
SW16 4BE
Sales
020 8629 8028

Energy Rating: D. We aim to make our particulars both accurate and reliable. However they are not guaranteed; nor do they form part of an offer or contract. If you require clarification on any points then please contact us, especially if you're traveling some distance to view. Please note that appliances and heating systems have not been tested and therefore no warranties can be given as to their good working order.

 **RICS** | Regulated
Estate Agent
and Letting Agent

[dexters.co.uk](https://www.dexters.co.uk)