



Northborough Road, SW16  
£450,000

**Dexters**



## Northborough Road, SW16

A well presented two double bedroom house with a private rear garden.

Northborough Road is conveniently located 0.9 miles from Norbury mainline station offering excellent transport links to London Bridge and Victoria. The area is well equipped with accessible bus routes, a variety of amenities along with good schools, making it an ideal location for families.

### Features

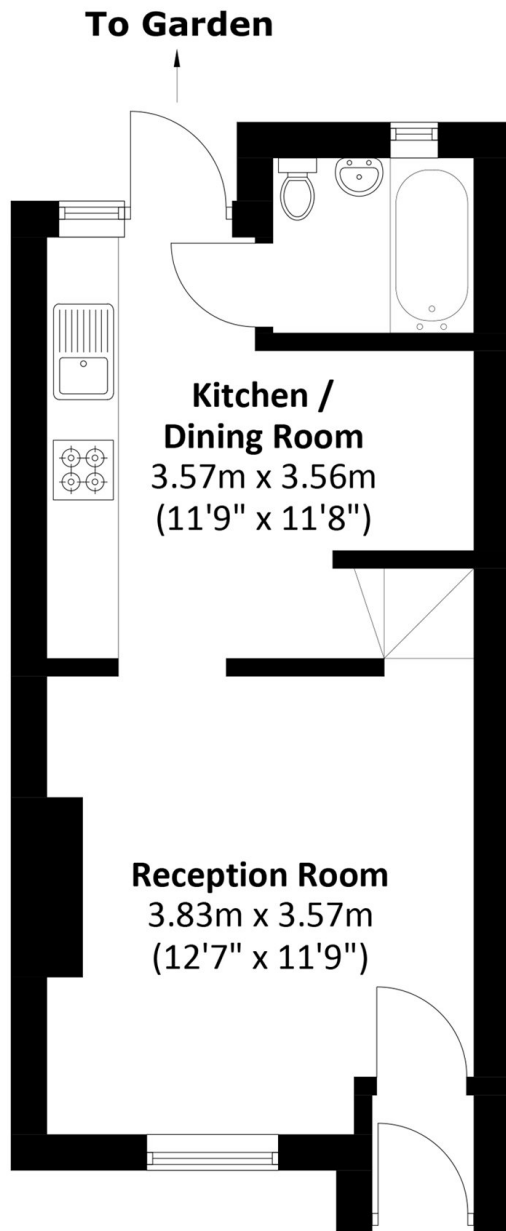
- Two bedrooms
- Freehold house
- Upstairs bathroom
- Private garden
- 0.9 miles from station
- Energy rating: D



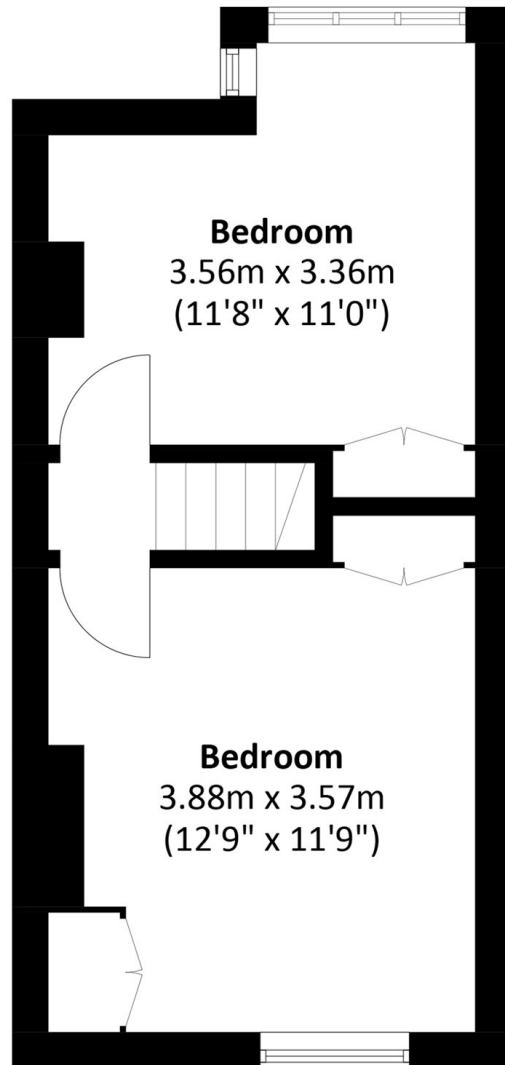




Northborough Road,  
London, SW16



**Ground Floor**



**First Floor**

Total area: Approx. 56.8 sq. meters (611.3 sq. feet)