



**Northborough Road, SW16**

**£425,000**

A well presented two double bedroom house with a private rear garden.  
Energy rating: D



Northborough Road is conveniently located 0.9 miles from Norbury mainline station offering excellent transport links to London Bridge and Victoria. The area is well equipped with accessible bus routes, a variety of amenities along with good schools, making it an ideal location for families.

Two bedrooms, Freehold house, Upstairs bathroom, Private garden, 0.9 miles from station, Energy rating: D

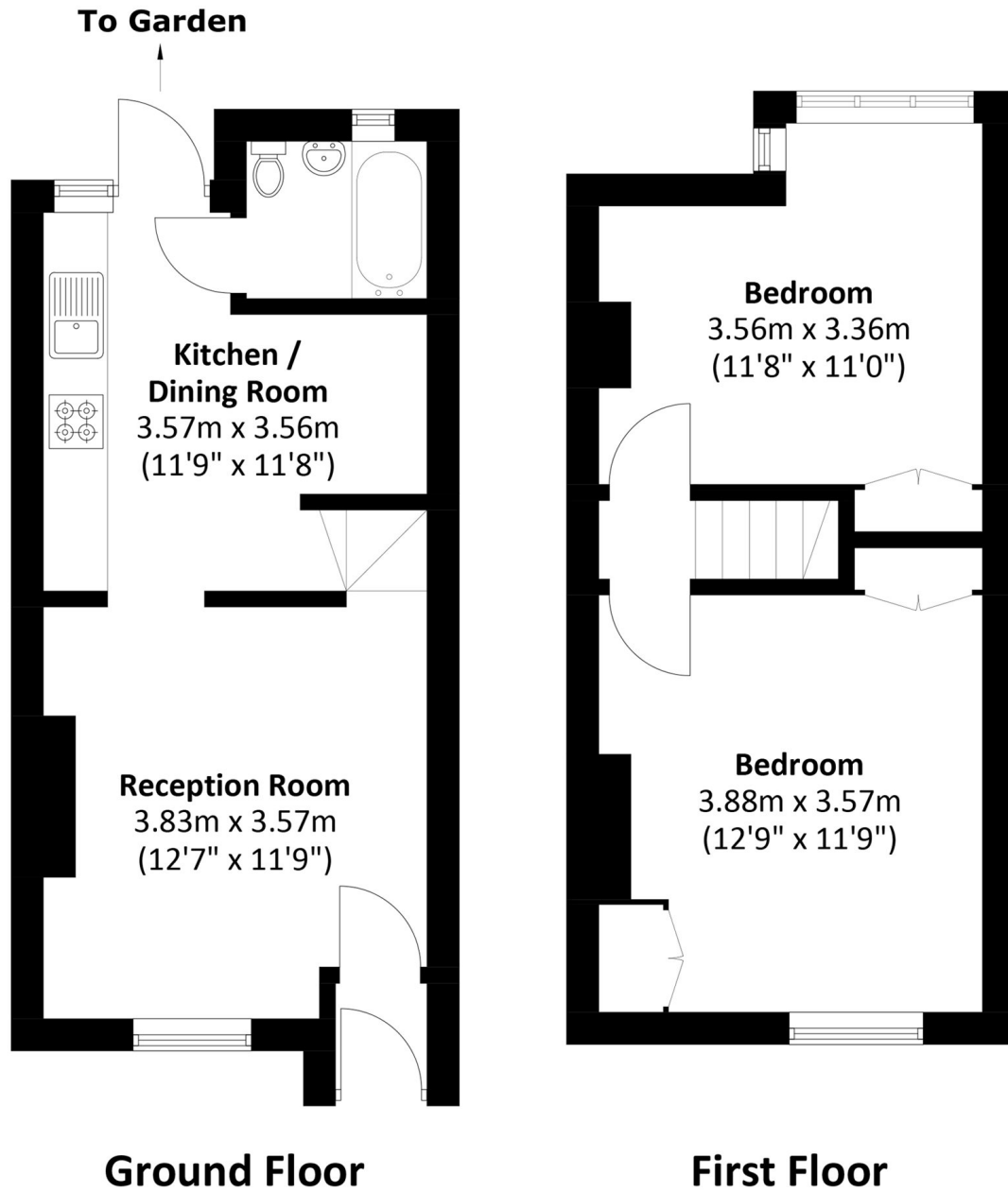












Total area: Approx. 56.8 sq. meters (611.3 sq. feet)

James Alexander  
1341 London Road,  
Norbury, SW16 4BE  
020 8629 8028  
norburysales@dexters.co.uk

Energy Rating: D We aim to make our particulars both accurate and reliable. However they are not guaranteed; nor do they form part of an offer or contract. If you require clarification on any points then please contact us, especially if you're travelling some distance to view. Please note that appliances and heating systems have not been tested and therefore no warranties can be given as to their good working order.