



Brockenhurst Way, SW16  
£525,000

**Dexters**



## Brockenhurst Way, SW16

A well presented, three bedroom end of terrace family home, with off street parking located just 0.7 miles from Norbury Station.

This well-presented three-bedroom end of terrace home offers bright and spacious accommodation throughout. The property features a welcoming entrance hall leading to two generous reception rooms and a modern fitted kitchen. Upstairs, a light and airy landing provides access to three well-proportioned bedrooms and the family bathroom. Further benefits include gas central heating, energy-efficient LED lighting throughout, and a fully boarded and insulated loft offering excellent storage potential. Externally, the property enjoys secure vehicle access to the rear, off-road parking for two cars, and a neatly maintained garden, making it an ideal family home.

This well-presented three-bedroom end of terrace home offers bright and spacious accommodation throughout. The property features a welcoming entrance hall leading to two generous reception rooms and a modern fitted kitchen. Upstairs, a light and airy landing provides access to three well-proportioned bedrooms and the family bathroom. Further benefits include gas central heating, energy-efficient LED lighting throughout, and a fully boarded and insulated loft offering excellent storage potential. Externally, the property enjoys secure vehicle access to the rear, off-road parking for two cars, and a neatly maintained garden, making it an ideal family home.

### Features

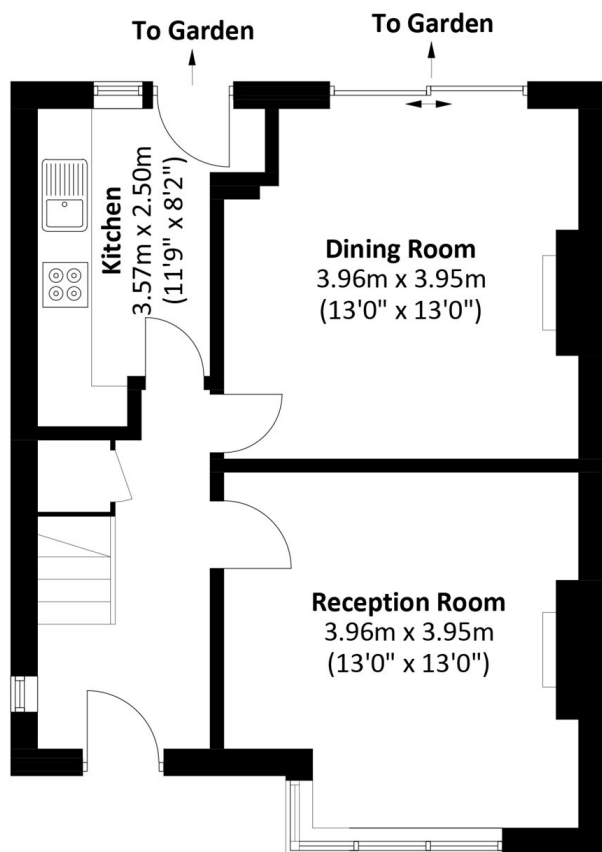
- Three Bedroom
- Large Garden
- 0.7 miles to station
- Secure rear access
- Off Street Parking
- EPC D



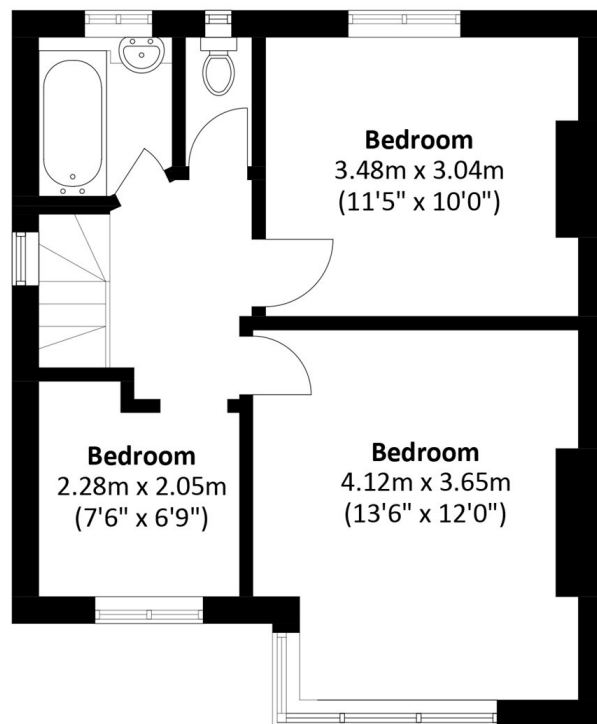




# Brockenhurst Way, London, SW16



**Ground Floor**



**First Floor**

Total area: Approx. 87.0 sq. meters (936.4 sq. feet)