



Newlands Road, SW16
£450,000

Dexters



Newlands Road, SW16

A beautifully presented, two double bedroom house with landscaped south facing garden located just 0.6 miles from Norbury station.

Having been tastefully updated throughout, this charming cottage offers a welcoming reception room with feature fireplace and attractive stripped wood flooring, a contemporary kitchen with dining area, and a modern family bathroom. Upstairs are two well-proportioned double bedrooms with access to useful loft storage. Externally, the property is set back from the road and enjoys a beautifully south facing landscaped rear garden providing an ideal space for relaxation or entertaining.

Having been tastefully updated throughout, this charming cottage offers a welcoming reception room with feature fireplace and attractive stripped wood flooring, a contemporary kitchen with dining area, and a modern family bathroom. Upstairs are two well-proportioned double bedrooms with access to useful loft storage. Externally, the property is set back from the road and enjoys a beautifully south facing landscaped rear garden providing an ideal space for relaxation or entertaining.

Newlands Road is a quiet residential street set just off Norbury town centre. The nearest mainline station, Norbury, is only 0.6 Miles away, offering regular rail services and easy commute links to London Bridge and London Victoria. The area is well served by highly regarded schools, with Norbury

Features

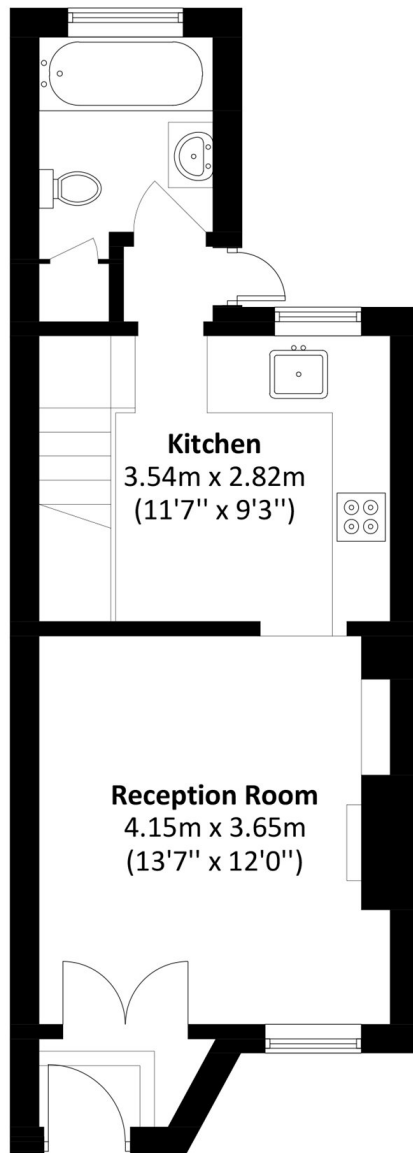
- Two double bedrooms
- Period features
- Excellent condition
- Landscaped garden
- 0.6 miles to station
- EPC: C



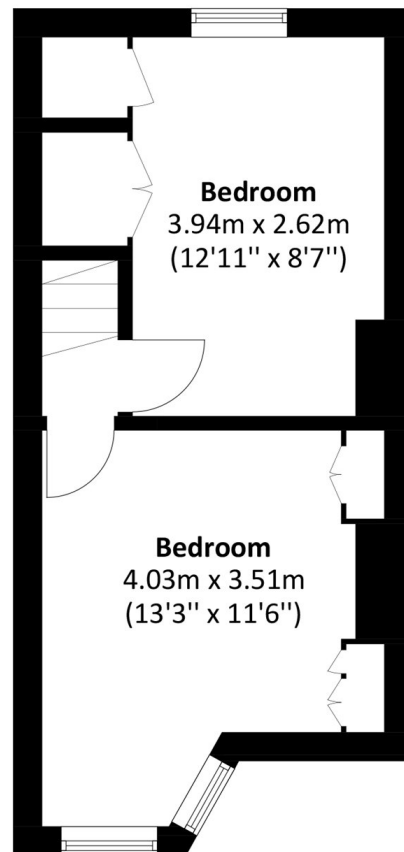




Newlands Road,
London, SW16



Ground Floor



First Floor

Total area: Approx. 61.0 sq. meters (656.5 sq. feet)