



Norbury Hill, SW16
£650,000

Dexters



Norbury Hill, SW16

A well presented, three bedroom semi detached home with a large mature garden and off street parking.

Situated on a popular road, this well-presented family home offers spacious and versatile accommodation throughout. The first floor features three bedrooms and a modern family bathroom.

On the ground floor, a generous entrance hall leads to a bright, dual-aspect through reception room, a separate family kitchen, a separate utility room, and a convenient downstairs WC.

Additional benefits include a large mature garden, off-street parking and garage

Situated on a popular road, this well-presented family home offers spacious and versatile accommodation throughout. The first floor features three bedrooms and a modern family bathroom.

On the ground floor, a generous entrance hall leads to a bright, dual-aspect through reception room, a separate family kitchen, a separate utility room, and a convenient downstairs WC.

Features

Additional benefits include a large mature garden, off-street parking and

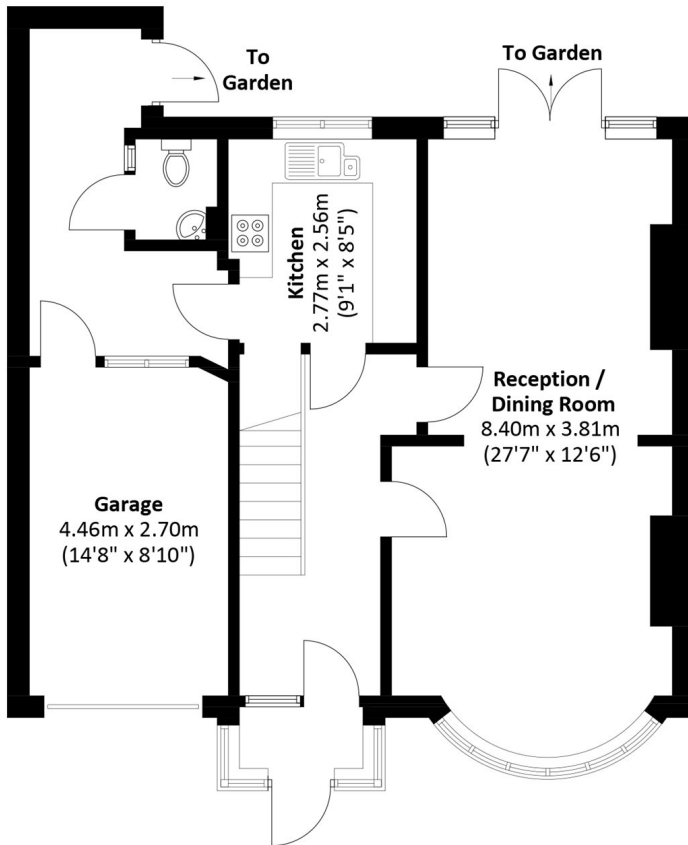
- Three bedrooms
- Semi detached
- Off street parking
- Garage
- Large garden
- EPC: D



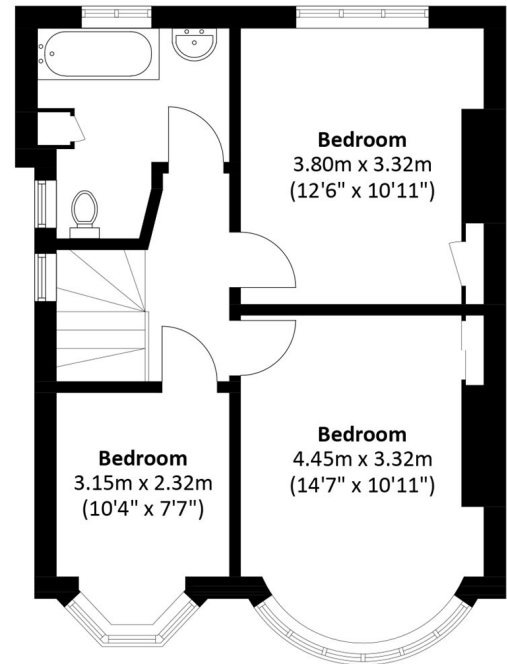




Norbury Hill, London, SW16



Ground Floor



First Floor

Total area: Approx. 118.3 sq. meters (1,273.3 sq. feet)