



Christian Fields, SW16

£2,950 Per calendar month

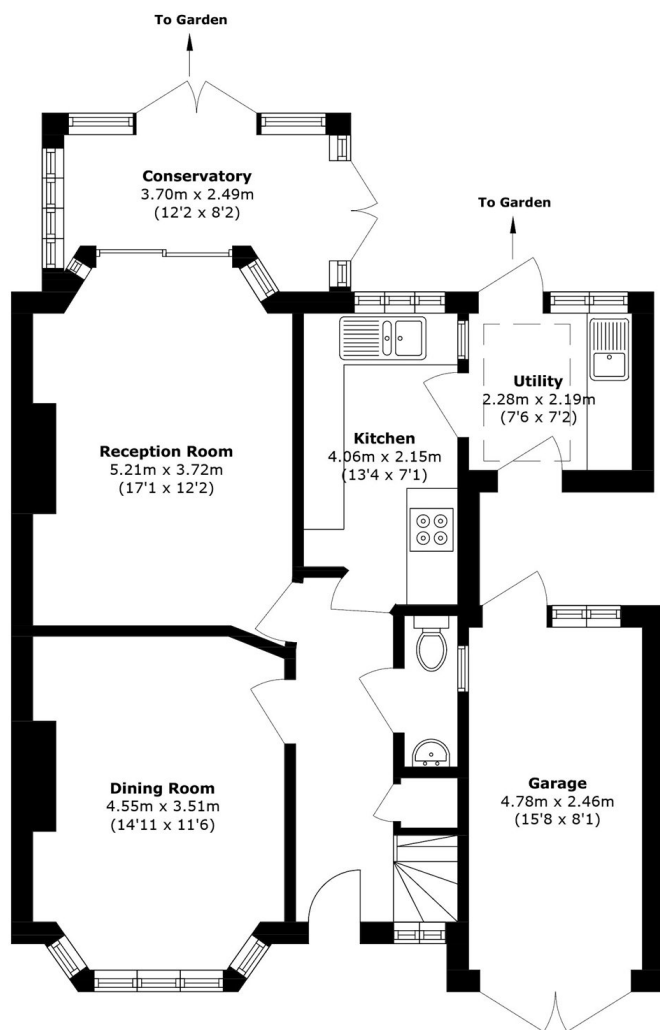
Introducing a well-presented end of terrace house ideally suited to families. The home boasts three bedrooms, each providing ample room for bedroom furniture and storage. The property is complemented by a bright and welcoming living area, designed for both relaxation and entertaining, alongside a well-appointed kitchen offering plentiful worktop and cupboard space. The property offers a large private garden with dual access from the dining area and Kitchen. Additional benefits include a contemporary bathroom, excellent natural light throughout, neutral décor and parking. Situated in a convenient location close to local amenities, schools and parks such as Streatham Common. It is also located close to transport links with Norbury Station just a 0.5 mile walk away, Streatham Station just 1.3 miles away and Streatham Common Station only 1.4 miles away. This property comes part-furnished.

Close to transport links with Norbury Station just 0.5 miles away, Streatham Station only 1.3 miles away and Streatham Common Station 1.4 miles away.

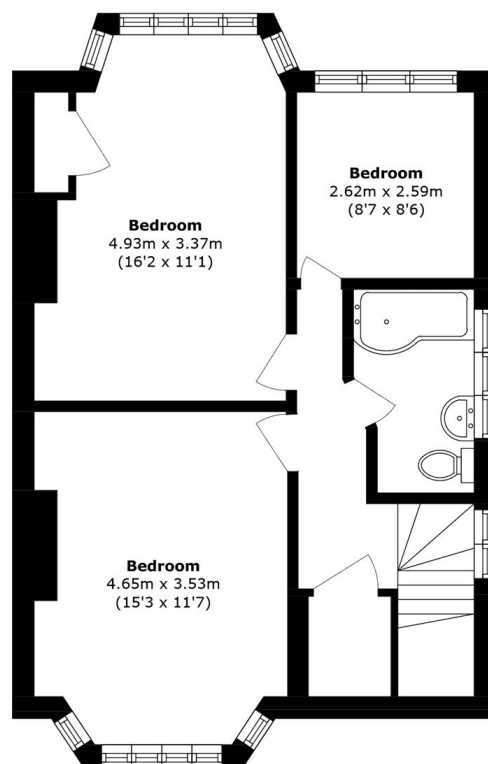
Features

- Three bedrooms
- End of terrace house
- Large reception
- Separate dining area
- Modern kitchen
- Private garden
- Parking
- Close to transport links
- Ideal for Families

Christian Fields, London, SW16



Ground Floor



First Floor

Total area (approx.): 122.0 sq. m (1313.2 sq. ft)
(Excluding Garage)
Garage (approx.): 11.5 sq. m (123.7 sq. ft)