



Beckway Road, SW16

£2,300 Per calendar month

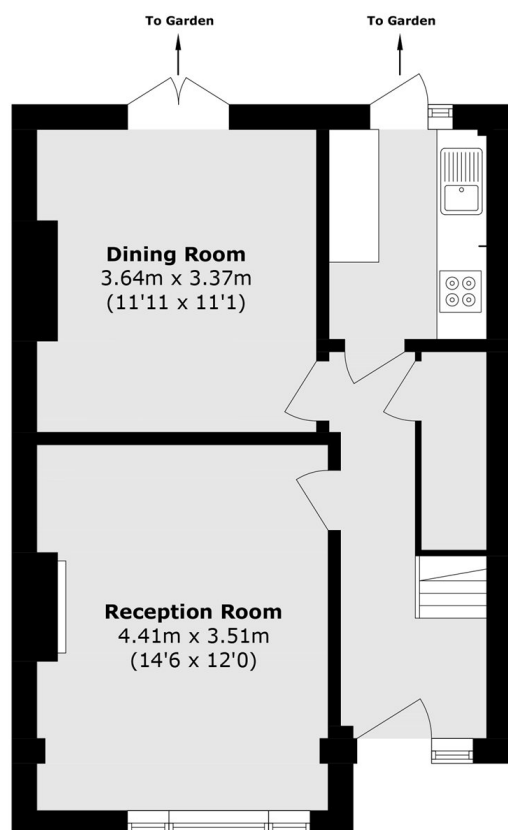
A refurbished and beautifully presented two double bedroom terraced house with an additional study, offered in excellent condition throughout and ideal for families. The property features well-proportioned living spaces filled with natural light, creating a warm and welcoming atmosphere. It offers a large reception area, a separate modern kitchen and dining room leading into the private garden perfect for entertaining or relaxing in a peaceful setting. All three bedrooms are generously sized, offering flexibility for family living, guests, or a home office, along with a modern family bathroom. Overall, this attractive home combines quality, space, and privacy with additional benefits such as off-street parking. This property comes unfurnished.

Close to transport links this property is 0.9 miles from Norbury Station and 1.1 miles from Streatham Common Station.

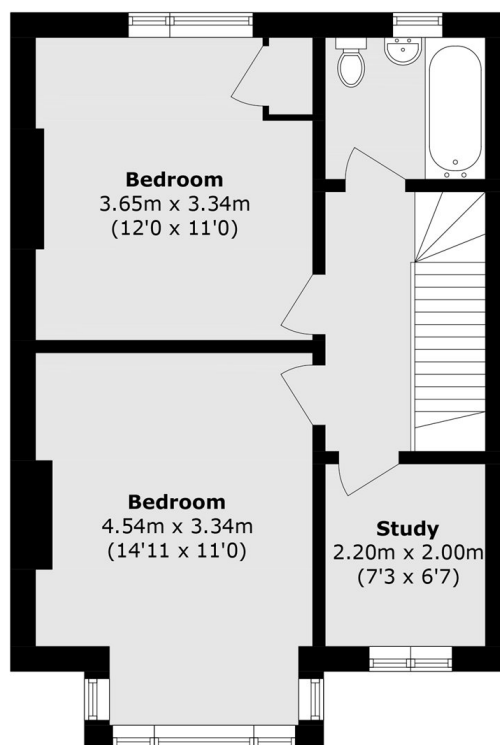
Features

- Three bedroom house
- Modern kitchen
- Newly refurbished
- Modern bathroom
- Large reception
- Separate dining area
- Private garden
- Off-street parking

Beckway Road, London, SW16



Ground Floor



First Floor

Total area (approx.): 84.7 sq. m (911.7 sq. ft)