



Manor Road, CR4

£2,500 Per calendar month

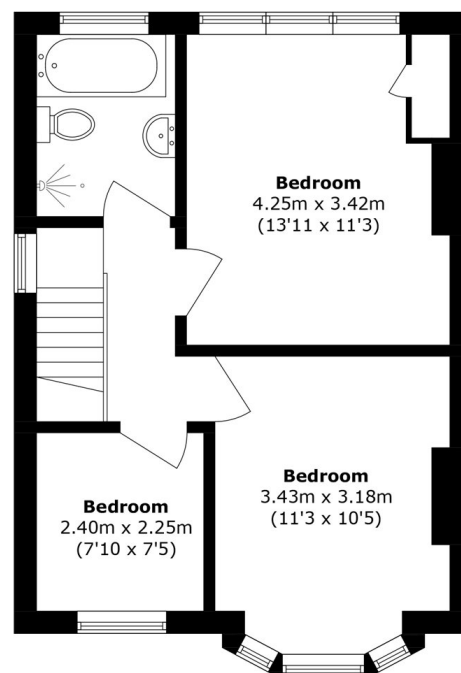
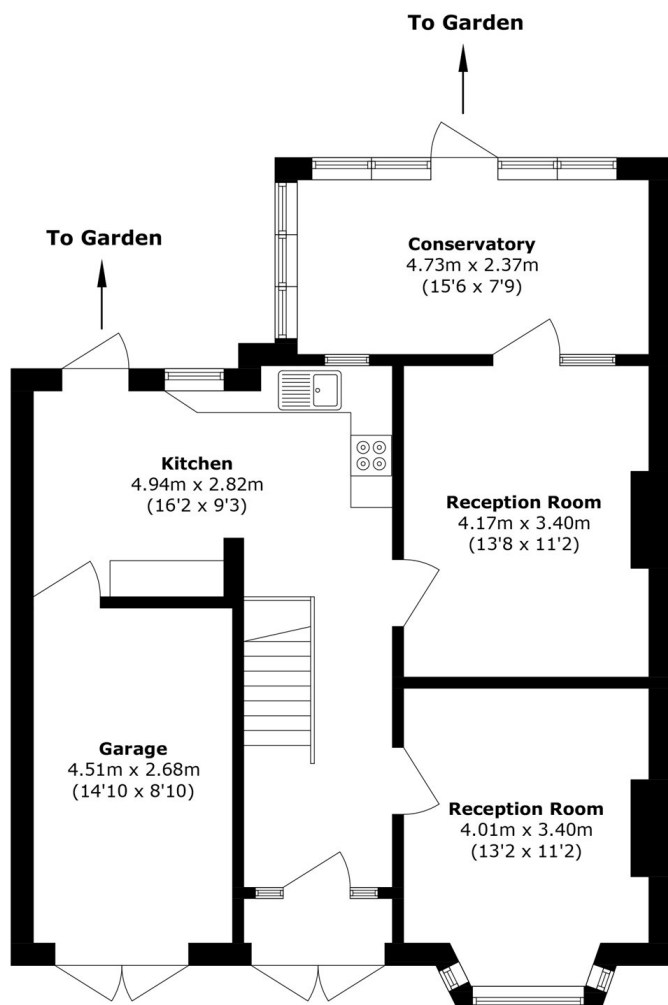
This well-presented three bedroom home offers comfortable living with a practical layout, ideal for families. The property features a bright and spacious living area, a separate reception room leading out into the conservatory and private garden. It features a generous size kitchen and dining area with ample storage and workspace. Upstairs, there are three well-proportioned bedrooms, each offering plenty of natural light, along with a family bathroom. The property has parking available and is conveniently located close to local amenities, schools and transport links.

Norbury station is approximately 1.3 miles away.

Features

- Three bedroom
- End of terrace
- Family home
- Private garden
- Two receptions
- Spacious
- Kitchen/diner
- Conservatory
- Parking

Manor Road, Mitcham, CR4



Total area (approx.): 120.4 sq. m (1,295.9 sq. ft)
(Including Garage)