



Eldertree Way, CR4
£595,000

Dexters



Eldertree Way, CR4

Welcome to this beautifully presented five-bedroom family home situated on a private residential road with a private driveway and off-street parking. Thoughtfully modernised and fully extended this property offers spaciousness with plenty of natural light, making it an ideal property for a family.

The ground floor welcomes you to a bright and airy extended kitchen and dining area, perfect for entertaining or family gatherings. The kitchen boasts stylish, modern fittings and direct access to the rear garden with a out building useful for storage or a gym/sauna room. A separate reception room at the front provides a cosy retreat, featuring elegant finishes throughout. The ground floor also boasts a downstairs w.c.

On the first floor you will find three bright and spacious bedrooms with a family bathroom. The loft conversion adds two bedrooms with generous storage space, along with a family bathroom perfect for a home office or guest room. Externally, the property offers a driveway and easy off-street parking.

Located conveniently 0.5 miles from Mitcham Eastfields station, offer easy transport links to London Victoria. The property offers access to a

Features

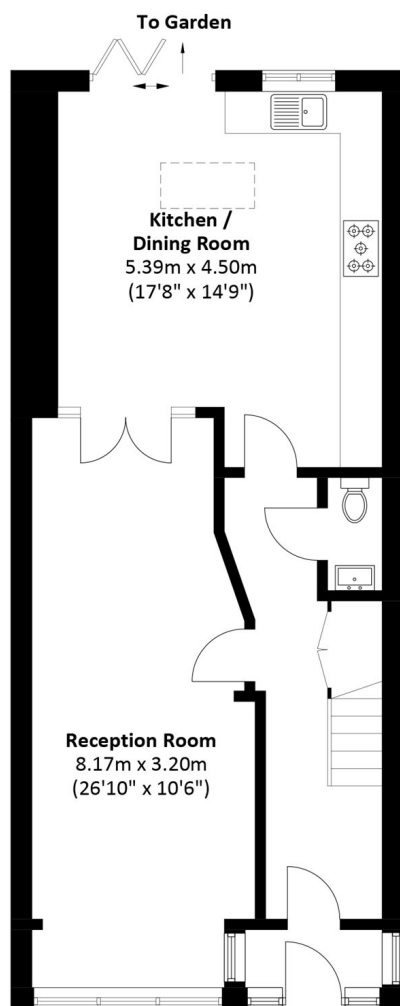
- Five bedrooms
- Extended kitchen
- High spec
- Garden room
- Extended loft
- Ground floor w.c



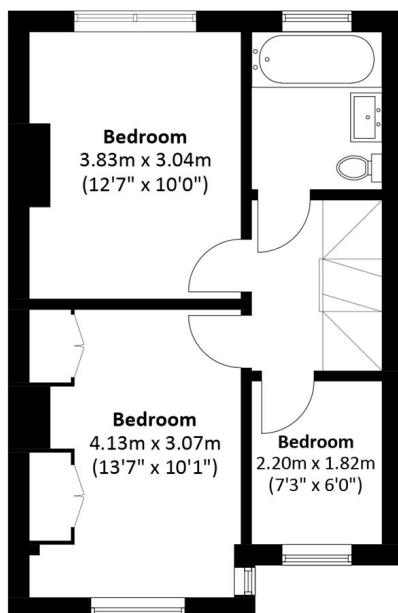




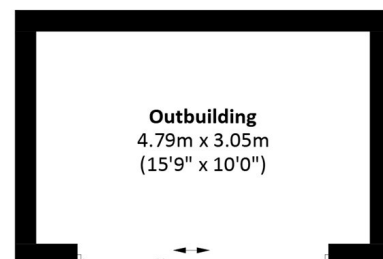
Eldertree Way, Mitcham, CR4



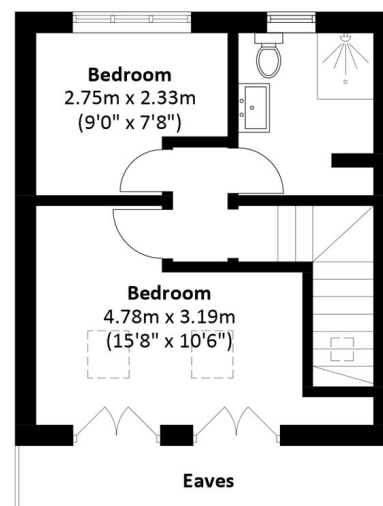
Ground Floor



First Floor



(Not Shown In Actual
Location / Orientation)



Second Floor

Total area: Approx. 130.2 sq. meters (1,401.5 sq. feet)
Outbuilding approx. 15.1 sq. meters (162.5 sq. feet)
(Excluding Eaves)