



Totton Road, CR7
£575,000

Dexters



Totton Road, CR7

Three bedroom family home offering spacious rooms, high ceilings and a large south-facing garden.

The ground floor offers an imposing reception room offering character features including original picture rails and cornicing. To the rear there is an open plan kitchen-diner leading to a conservatory and utility room overlooking a 150 ft garden featuring a timber outbuilding. The character features continue upstairs with picture rails and exposed original floorboards. The property also has off street parking.

The property is well positioned close to Thornton Heath station, providing direct rail links to both London Victoria and London Bridge. Good schools are nearby, as are recreational facilities of Norbury Park and Streatham Common.

Features

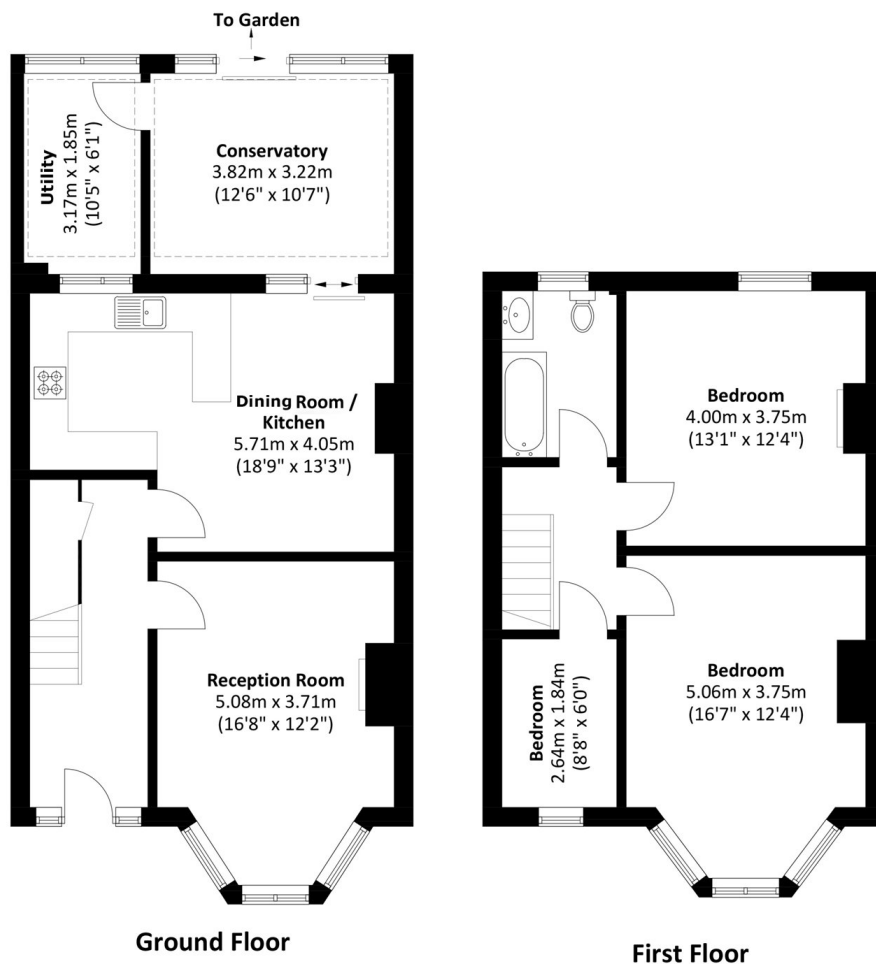
- Character features
- High ceilings
- 150ft garden
- Outbuilding with power
- Off street parking
- EPC: D







Totton Road, Thornton Heath, CR7



Total area: Approx. 117.1 sq. meters (1,260.5 sq. feet)