



Tomblin Mews, SW16
£500,000

Dexters



Tomblin Mews, SW16

Set within a modern development, this bright and airy two bedroom home is presented in excellent condition.

Offering bright and airy accommodation throughout, this elegant two-bedroom house features a striking double reception room filled with natural light, a contemporary fitted kitchen, and a spacious principal bedroom with access to a private balcony. The property is further enhanced by a charming rear garden, ideal for relaxing or entertaining.

Tomblin Mews is ideally located close to the excellent selection of shops and restaurants in Streatham Vale, while the open green spaces of Pollards Hill are just moments away.

Features

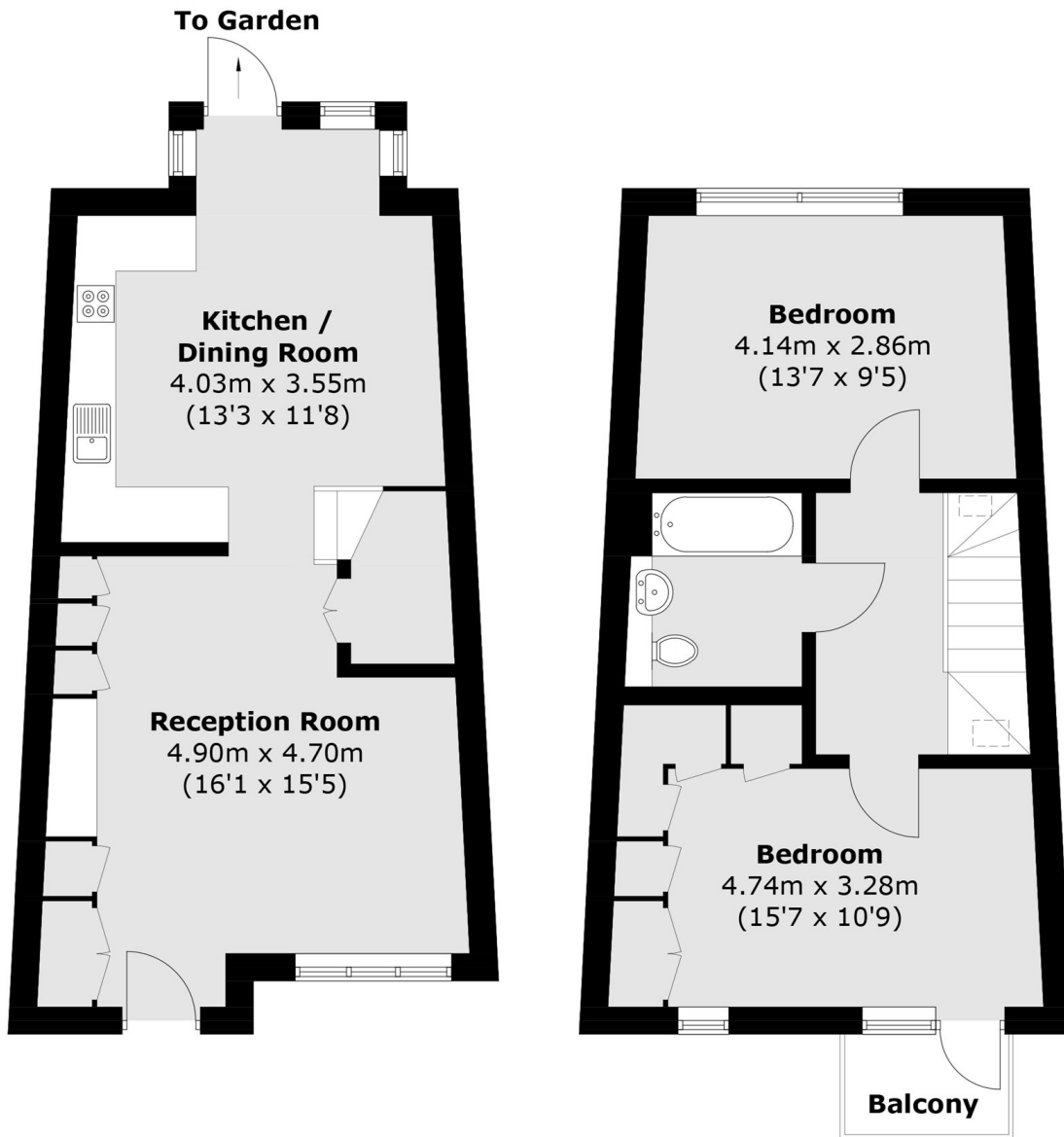
- Two bedrooms
- Freehold house
- Off street parking
- Open views
- Excellent condition
- EPC B







Tomblin Mews, London, SW16



Ground Floor

First Floor

Total area (approx.): 74.5 sq. m (801.9 sq. ft)
Balcony: 1.9 sq. m (20.4 sq. ft)