



Acacia Road, SW16

£450,000

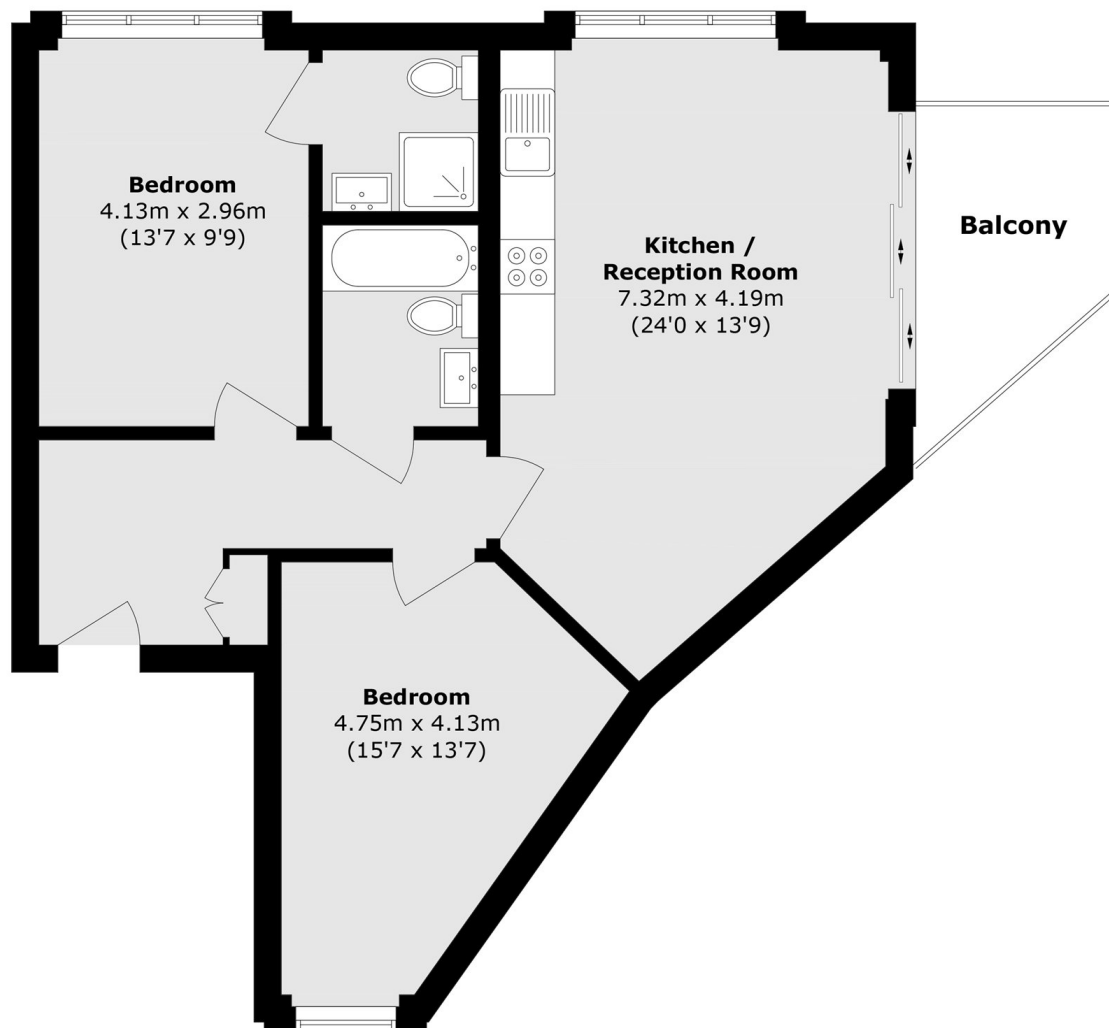
A spacious lateral two-bedroom, two-bathroom apartment, situated on the first floor of this share of the freehold block with a lift to each floor. There is a large balcony, a high specification German-designed kitchen, as well as German appliances throughout. This property is fully fitted with a Mechanical Ventilation with Heat Recovery (MVHR) system, which provides continuous fresh, filtered air while recovering up to 90% + of the energy used from air.

Lilium House is a boutique development tucked nicely away from the hustle and bustle of the main road but within convenient walking distance to shops, bars, restaurants and cafes as well as with extremely easy access to Norbury Station. The green open spaces of Norbury Park are just across the road, with Streatham Common also just a short walk away.

Features

- Two Bedrooms
- Two Bathrooms
- Balcony
- Share Of The Freehold
- 999 Year Leasehold
- Chain Free
- New Homes 10 Year Warranty

Acacia Road, Streatham, SW16



Total area (approx.): 70.1 sq. m (754.5 sq. ft)
Balcony area (approx.): 6.5 sq. m (69.9 sq. ft)