



## Acacia Road, SW16

### £350,000

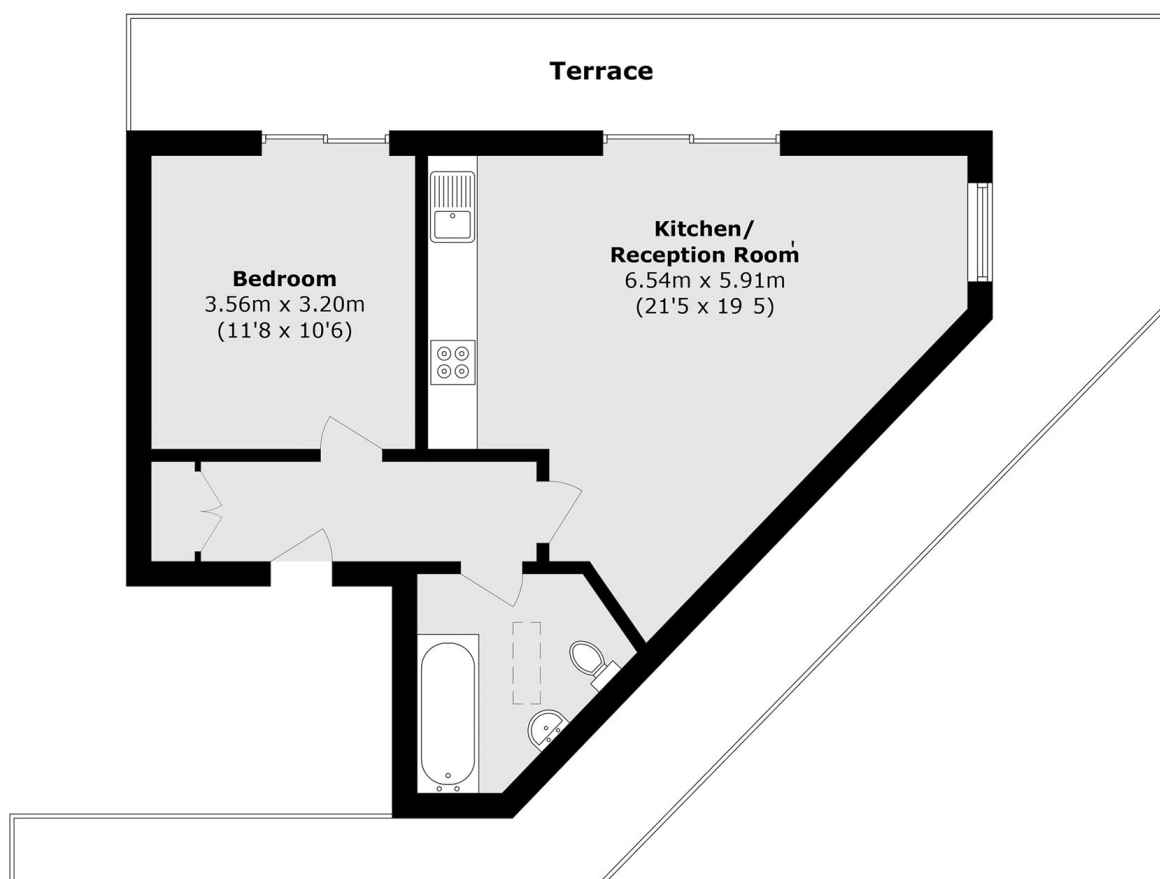
A one double penthouse apartment with a large wrap-around roof terrace. This apartment has bi-folding doors lead to the generous outside space from the reception room/kitchen. There is an incredible specification throughout, including German appliances, German-designed kitchens and underfloor heating in the bathroom. This property is fully fitted with a Mechanical Ventilation with Heat Recovery (MVHR) system, which provides continuous fresh, filtered air while recovering up to 90% + of the energy used from air.

Lilium House is a boutique development tucked nicely away from the hustle and bustle of the main road but within convenient walking distance to shops, bars, restaurants and cafes as well as with extremely easy access to Norbury Station. The green open spaces of Norbury Park are just across the road, with Streatham Common also just a short walk away.

### Features

- Penthouse Apartment
- One Double Bedroom
- Wrap-Around Roof Terrace
- Lift To All Floors
- Share Of The Freehold
- 999 Year Lease
- Chain Free
- New Homes 10 Year Warranty

# Acacia Road, Streatham, SW16



## Second Floor

Total area (approx.): 50.6 sq. m (544.7 sq. ft)

Terrace area (approx.): 40.2 sq. m (432.7 sq. ft)